

# Wisconsin's Public School Enrollment

---

## Past, Present, & Future

Presentation to the  
87<sup>th</sup> Wisconsin State Education Convention

January 24, 2008



Richelle Winkler & Sarah Kemp





# Applied Population Laboratory

---

- Research and outreach professionals at UW-Madison
- Custom projects examining population in places
  - Experts in GIS, Data Provision, Community Studies, & Demographic Methods
- Data providers
  - State Data Center for US Census Bureau
  - UW- Extension
- Small area population estimates and projections
  - School Enrollment Projections

Visit APL on the web to learn more: [www.apl.wisc.edu](http://www.apl.wisc.edu)

# Wisconsin's Public School Enrollment

---

## □ Questions:

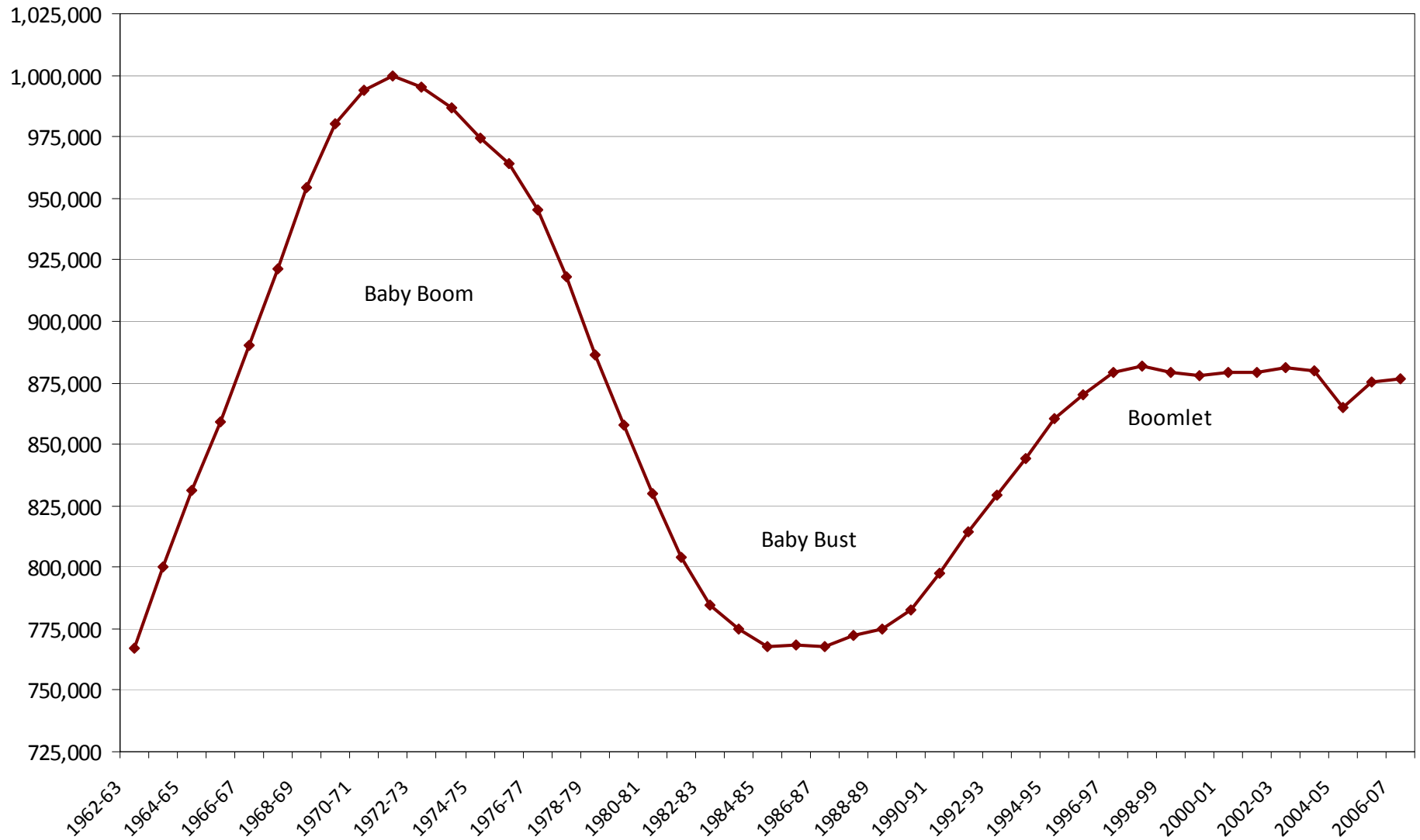
- How widespread is enrollment decline?
- Will the decline continue?

## □ Agenda:

- Enrollment trends in State of Wisconsin
- Broader demographic trends
- Enrollment projections



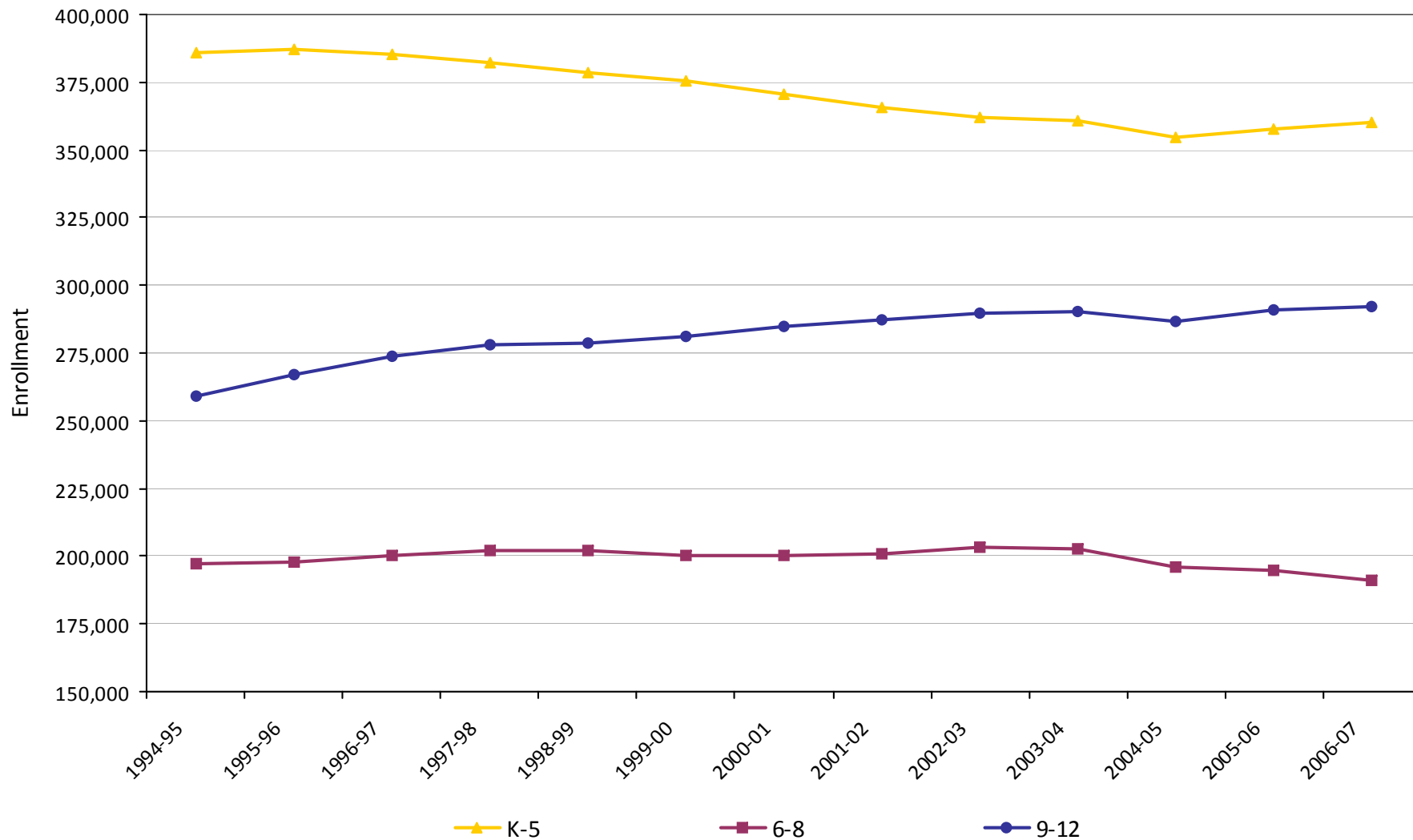
## K-12 Public School Enrollment, 1962-2006 State of Wisconsin



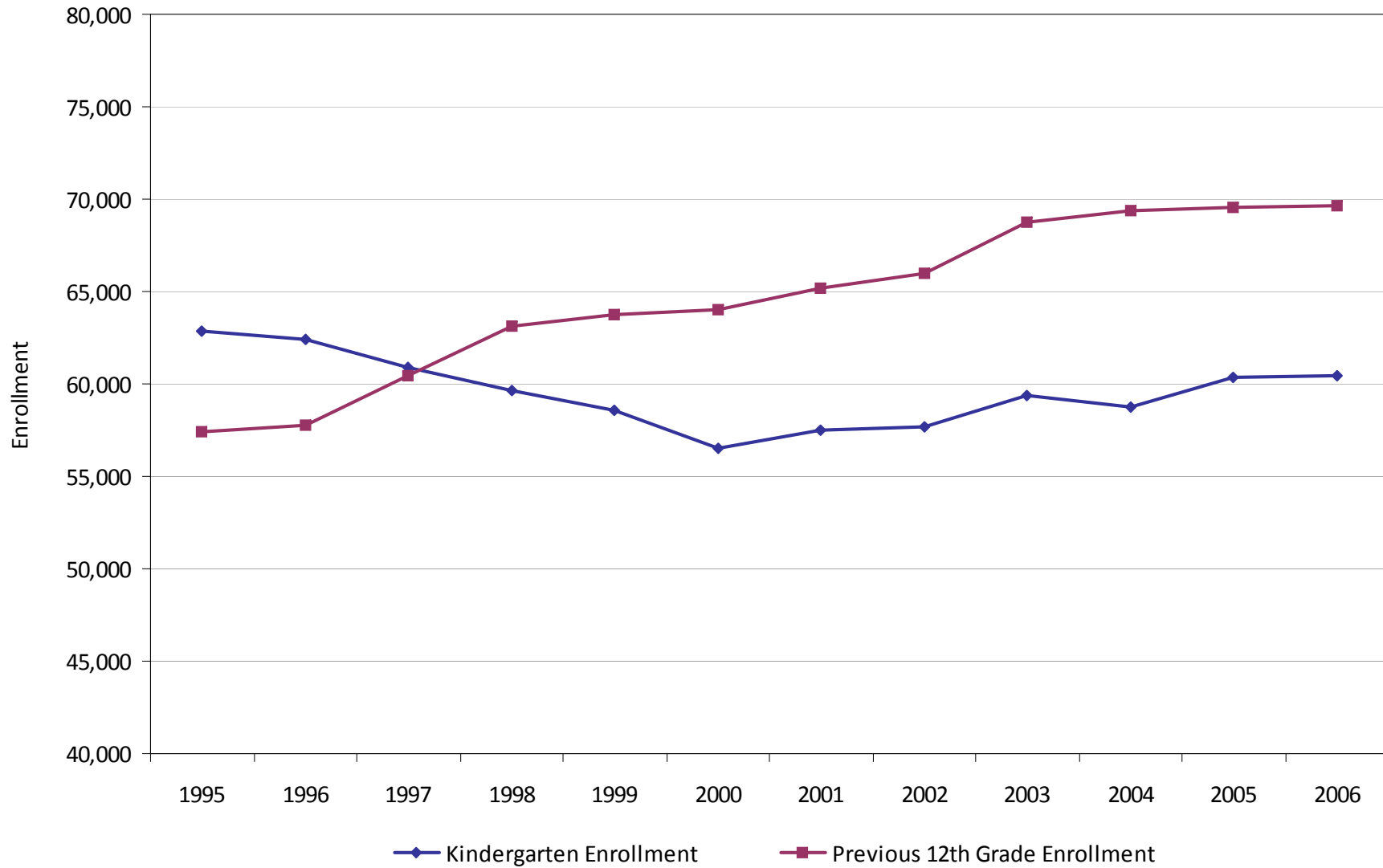
Wisconsin's Public School Enrollment: Past, Present, Future



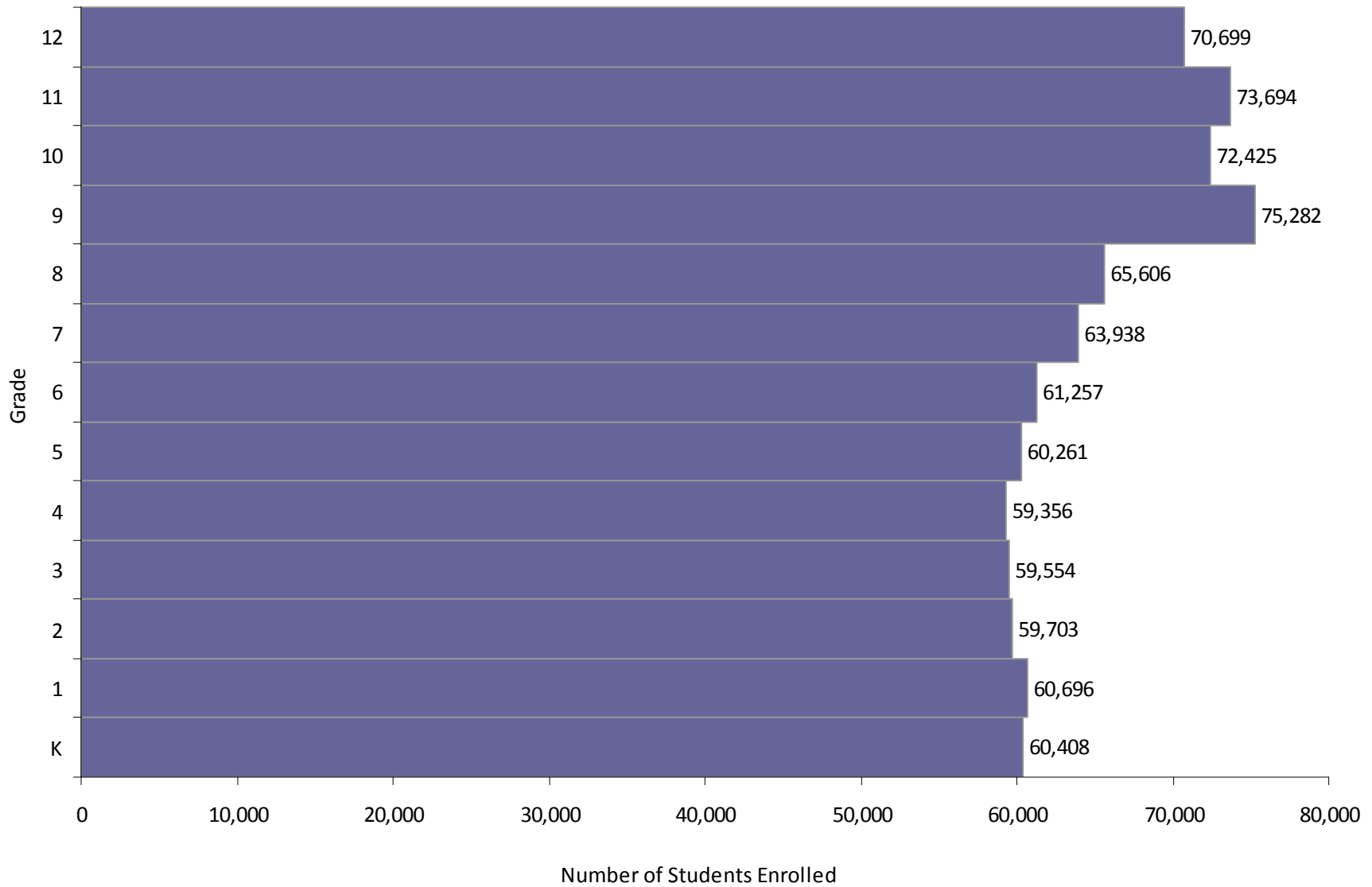
## Public School Enrollment, 1994-2006 by Grade Grouping



## Kindergarten Replacement, 1995 - 2006 State of Wisconsin



## Age Structure of Public School Students, Fall 2006 State of Wisconsin



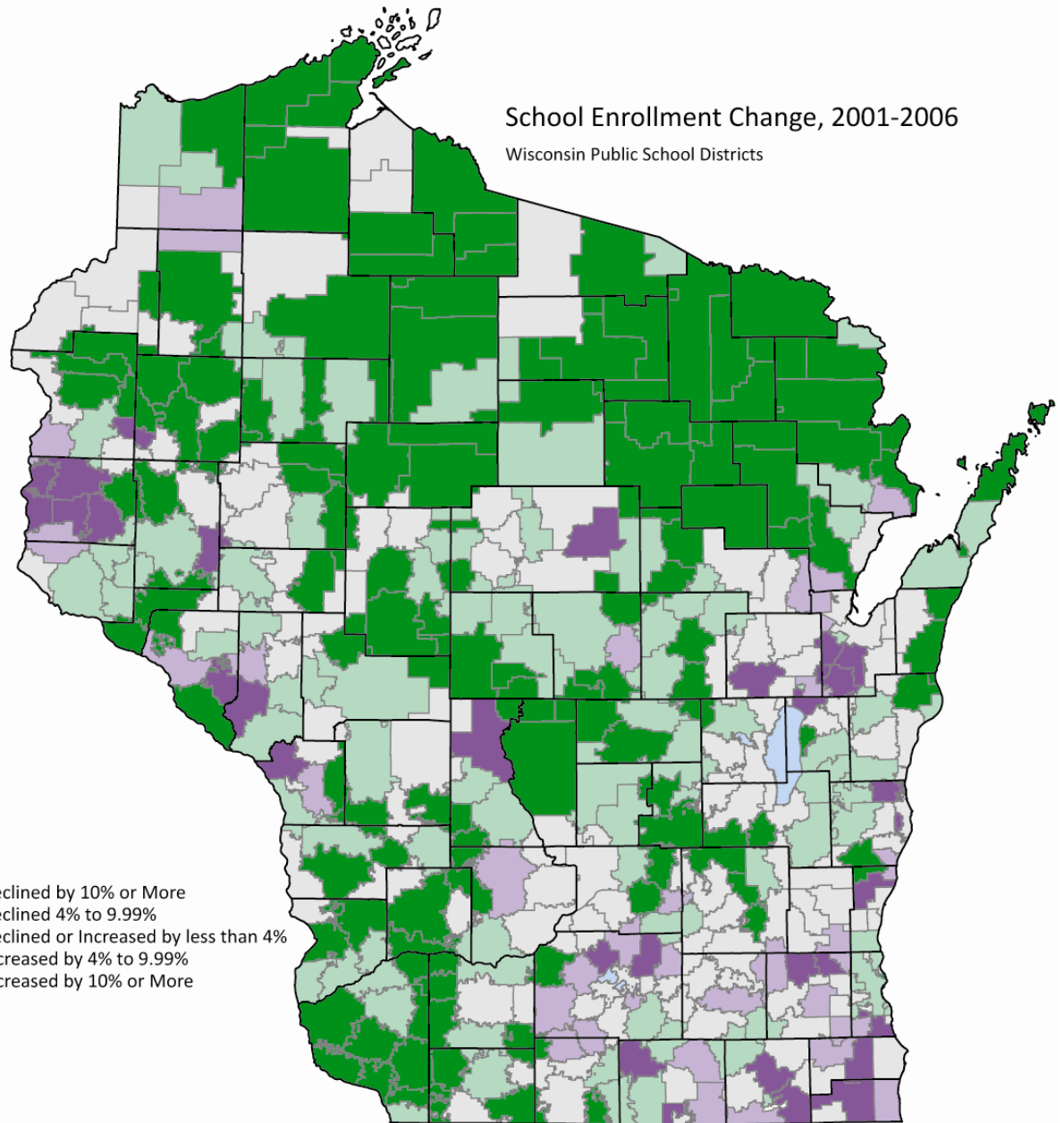
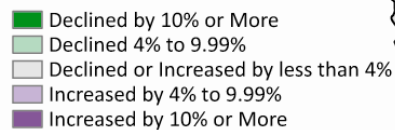
Wisconsin's Public School Enrollment: Past, Present, Future



## School Enrollment Change, 2001-2006

Wisconsin Public School Districts

- Statewide, enrollment declined by 1.4% (11,809 students)
- 69% of districts declined
- 118 districts (28%) declined by 10% or more
- Last year, state declined by 1,077 students, and 61% of districts experienced decline

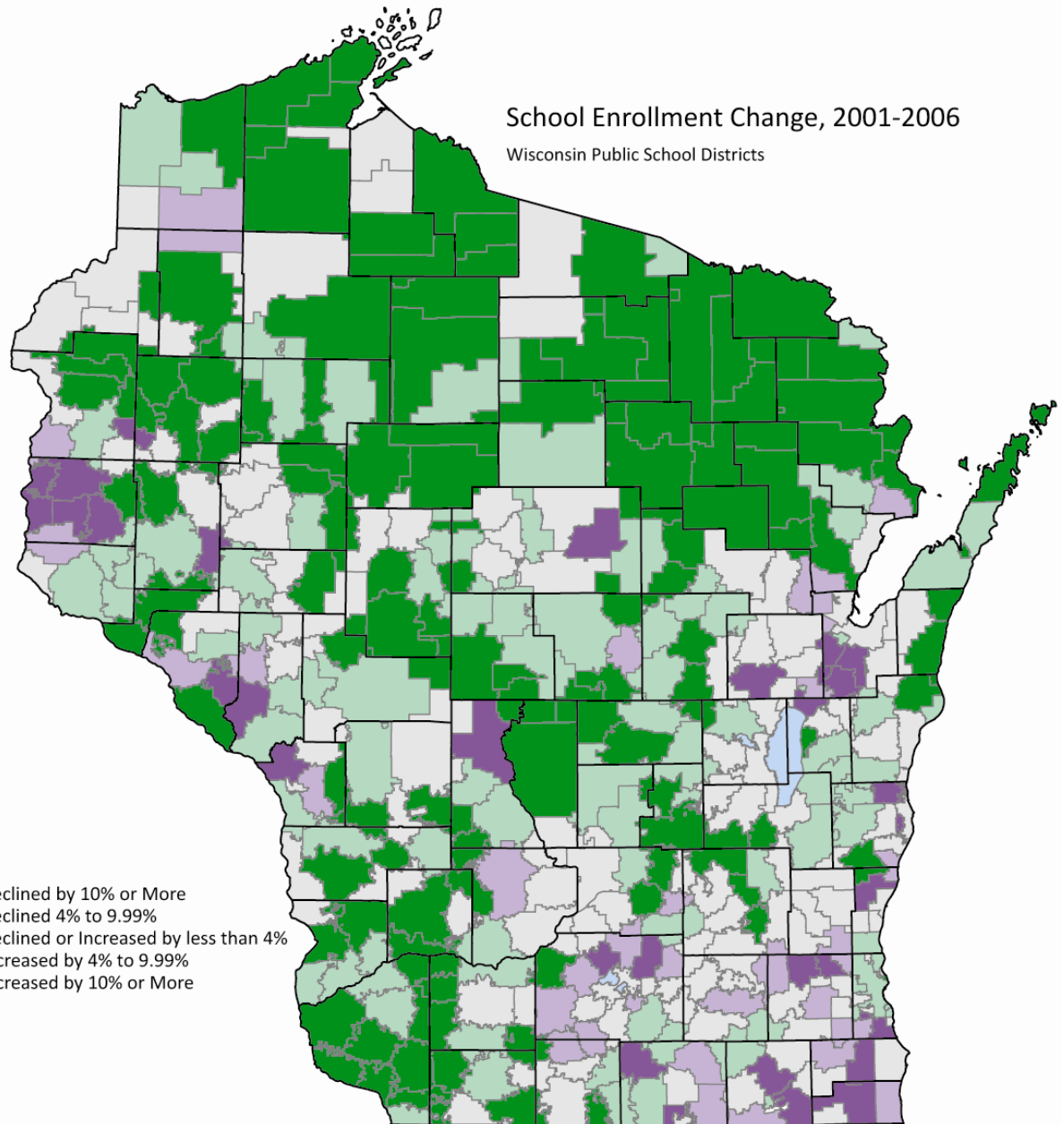


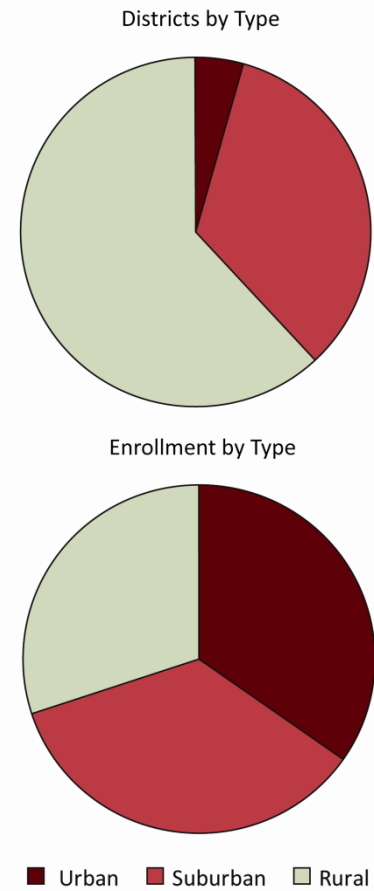
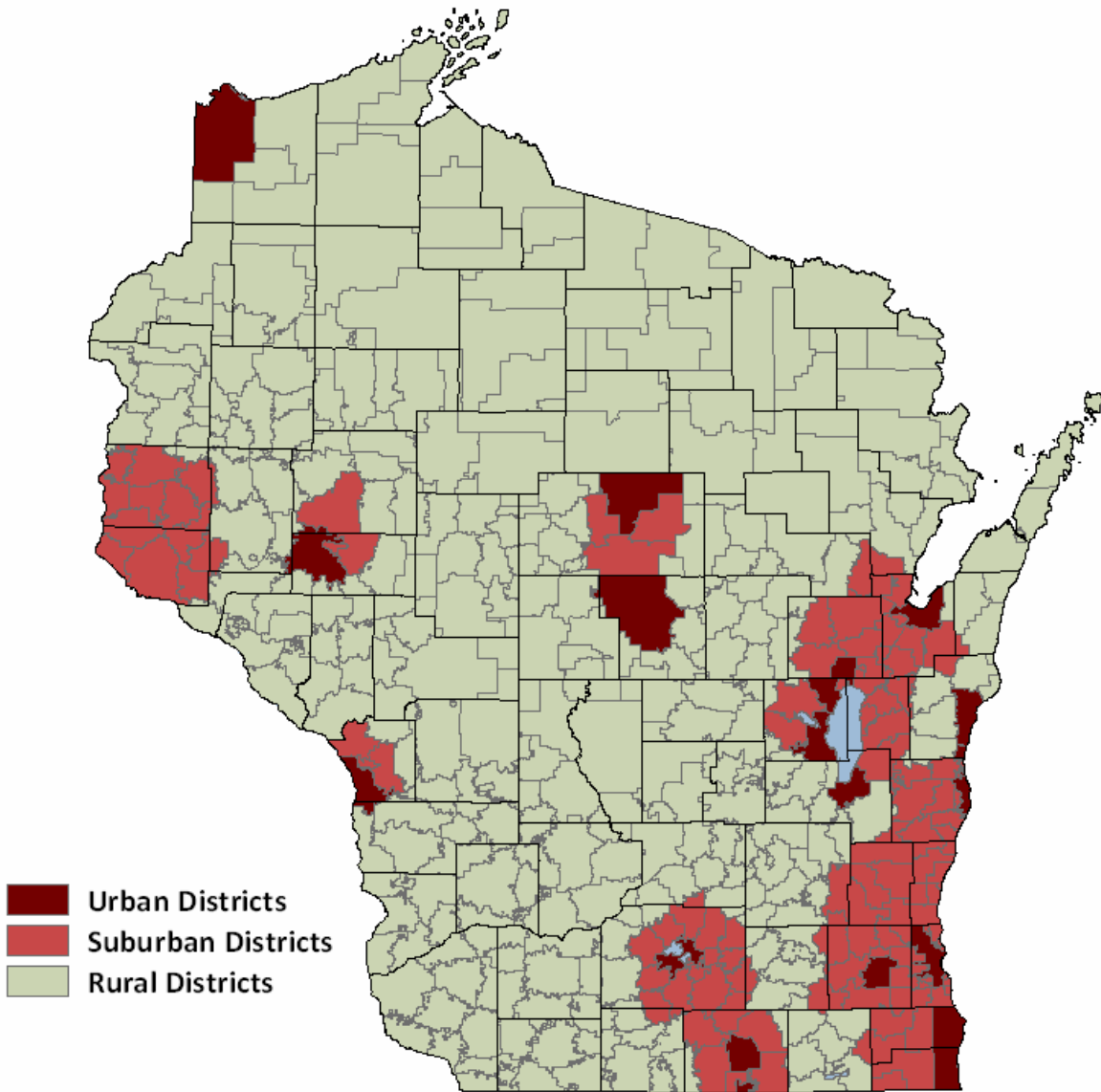


## School Enrollment Change, 2001-2006

Wisconsin Public School Districts

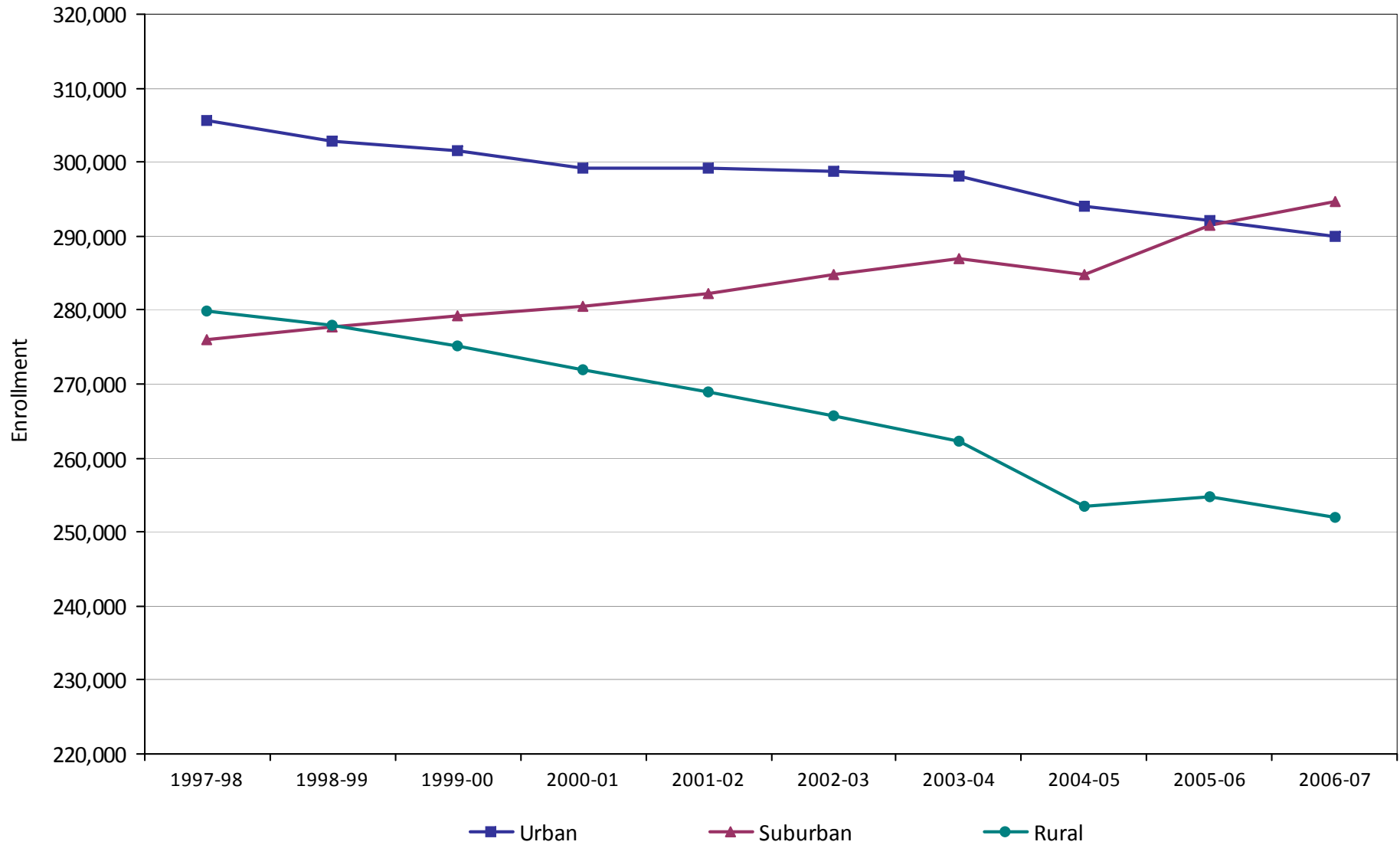
- **Most decline (%):**
  - Weyerhaeuser Area (34%)
  - Florence (32%)
  - Glidden (29%)
- **Most growth (%):**
  - Northern Ozaukee (81%)
  - Swallow (41%)
  - Somerset (28%)
  - Saint Croix Central (28%)
- **Most decline (#):**
  - Milwaukee (-8,227)
  - Eau Claire (-579)
  - La Crosse (-532)
- **Most growth (#):**
  - Kenosha (1,816)
  - Sun Prairie (1,003)
  - Hudson (919)
  - Kimberly Area (819)
  - Oak Creek-Franklin (812)



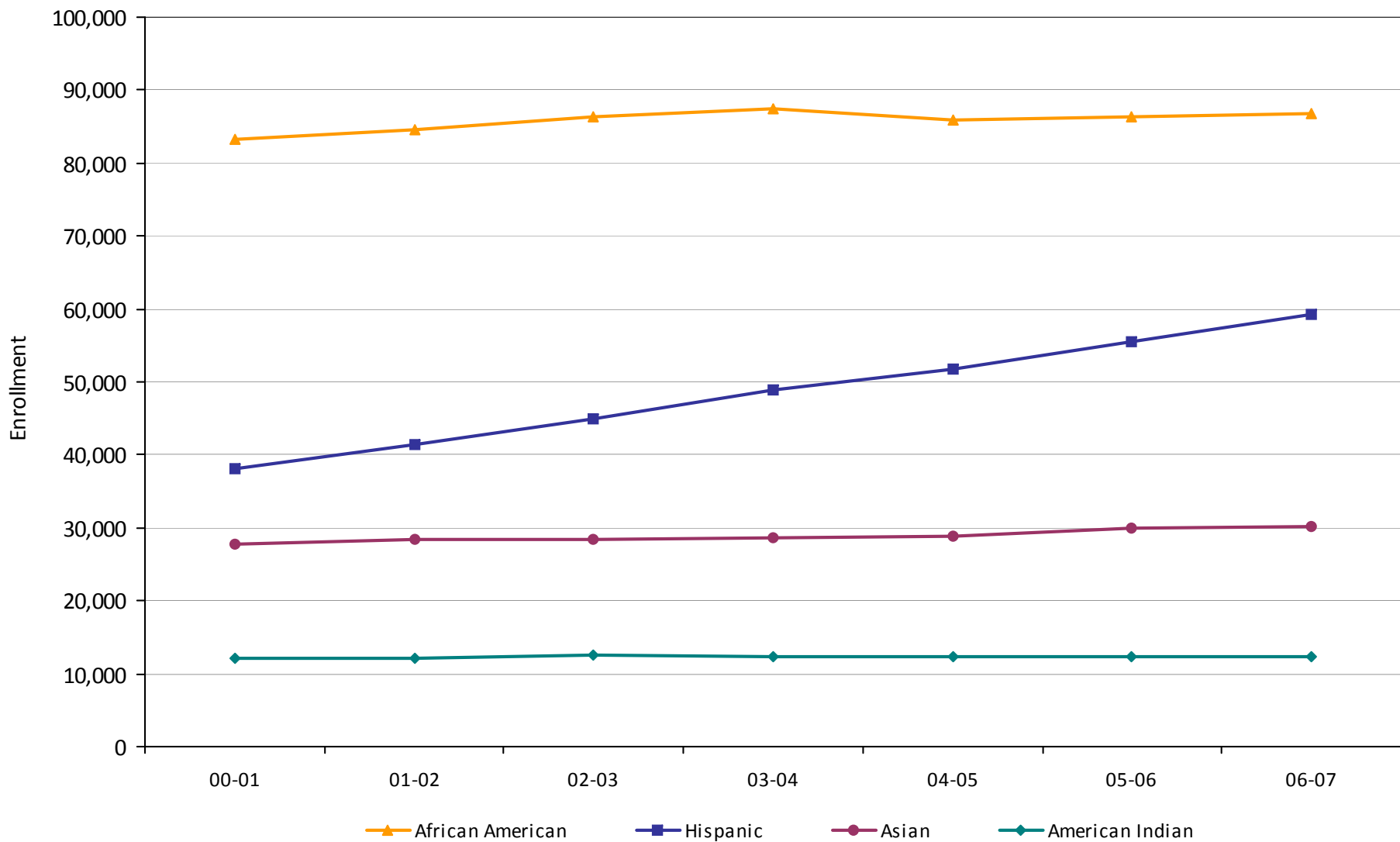


Wisconsin's Public School Enrollment: Past, Present, Future

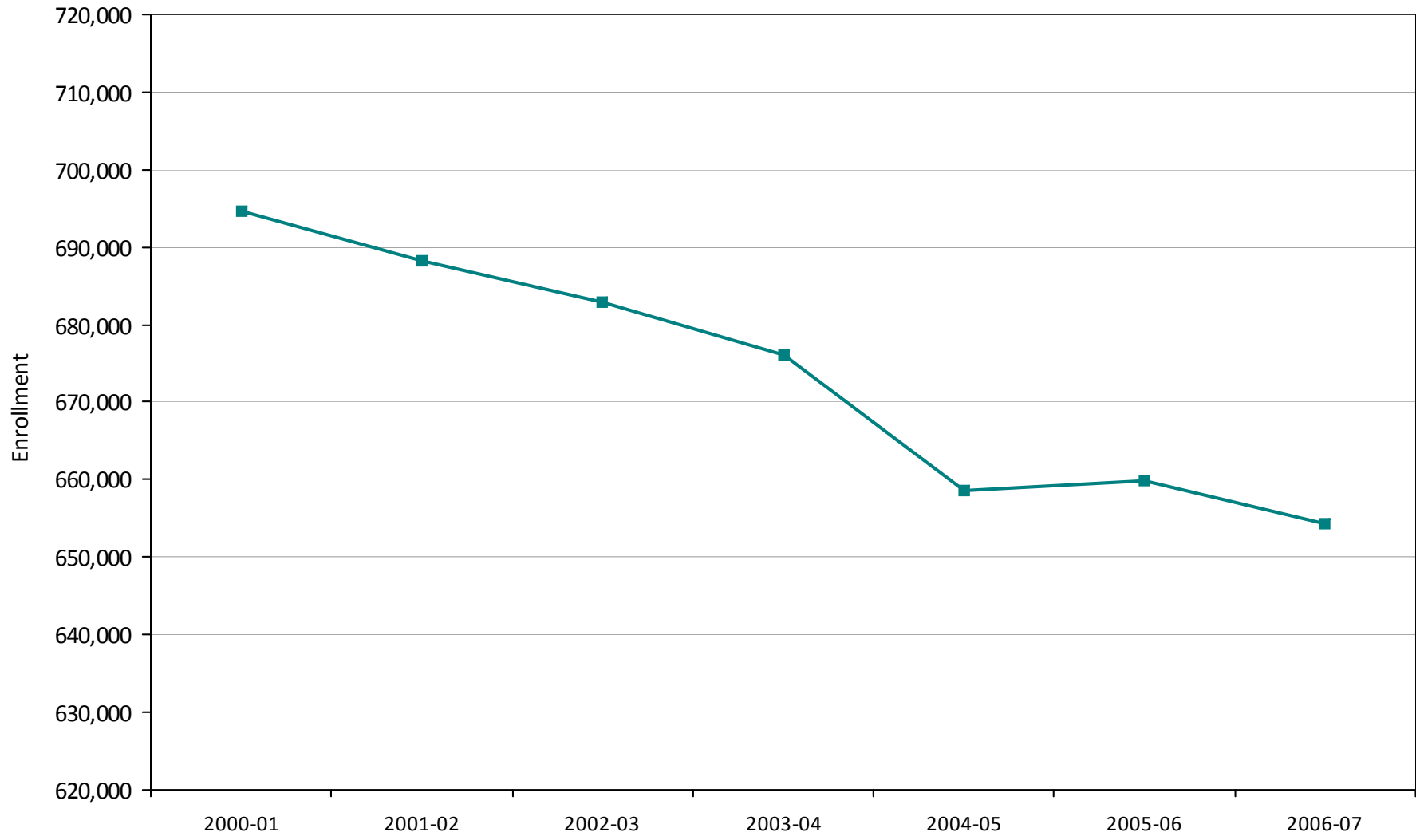
## K-12 Public School Enrollment, 1997-2006 Urban, Suburban, and Rural Districts



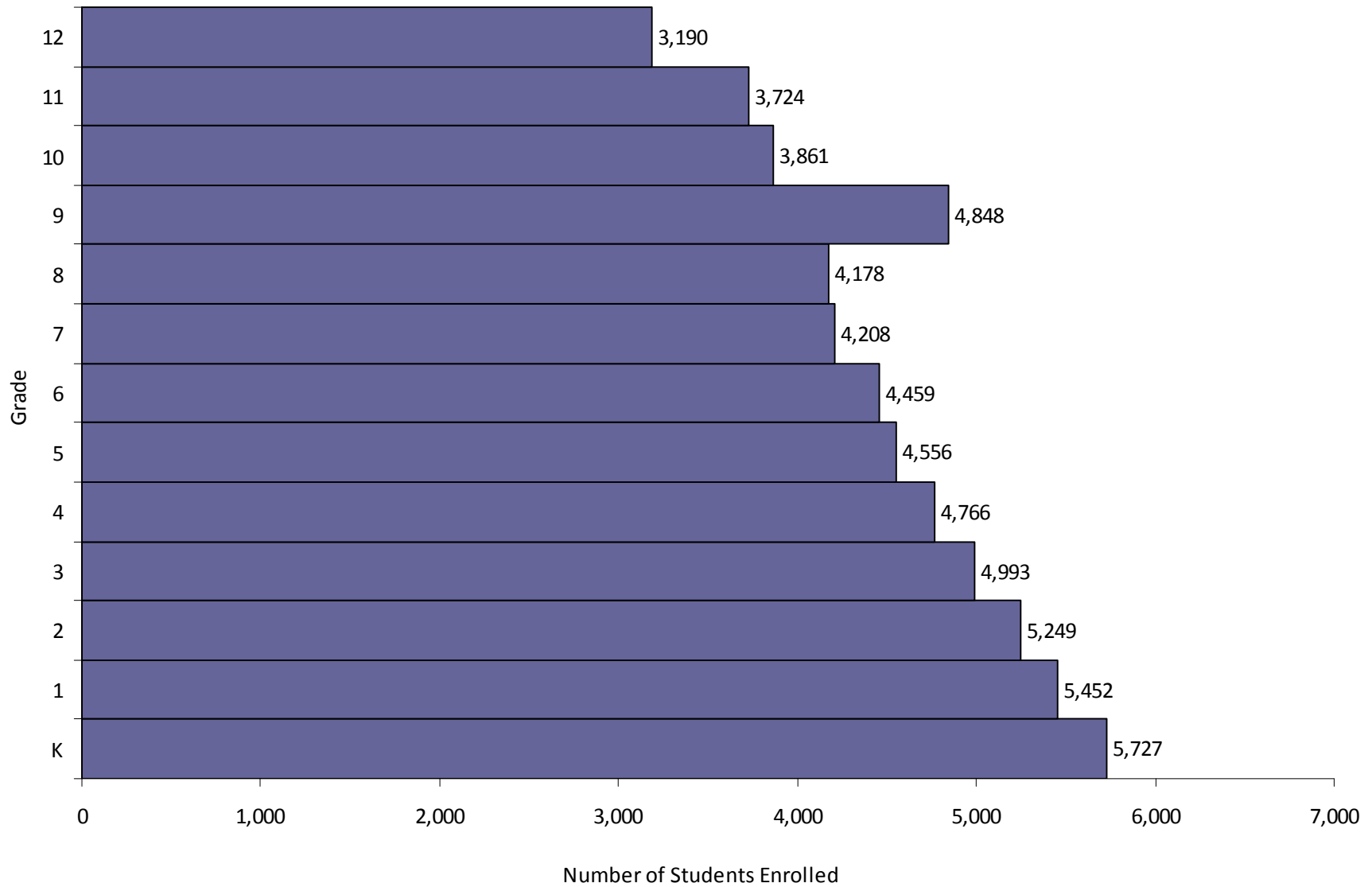
## K-12 Public School Enrollment, 2000-2006 Minority Students

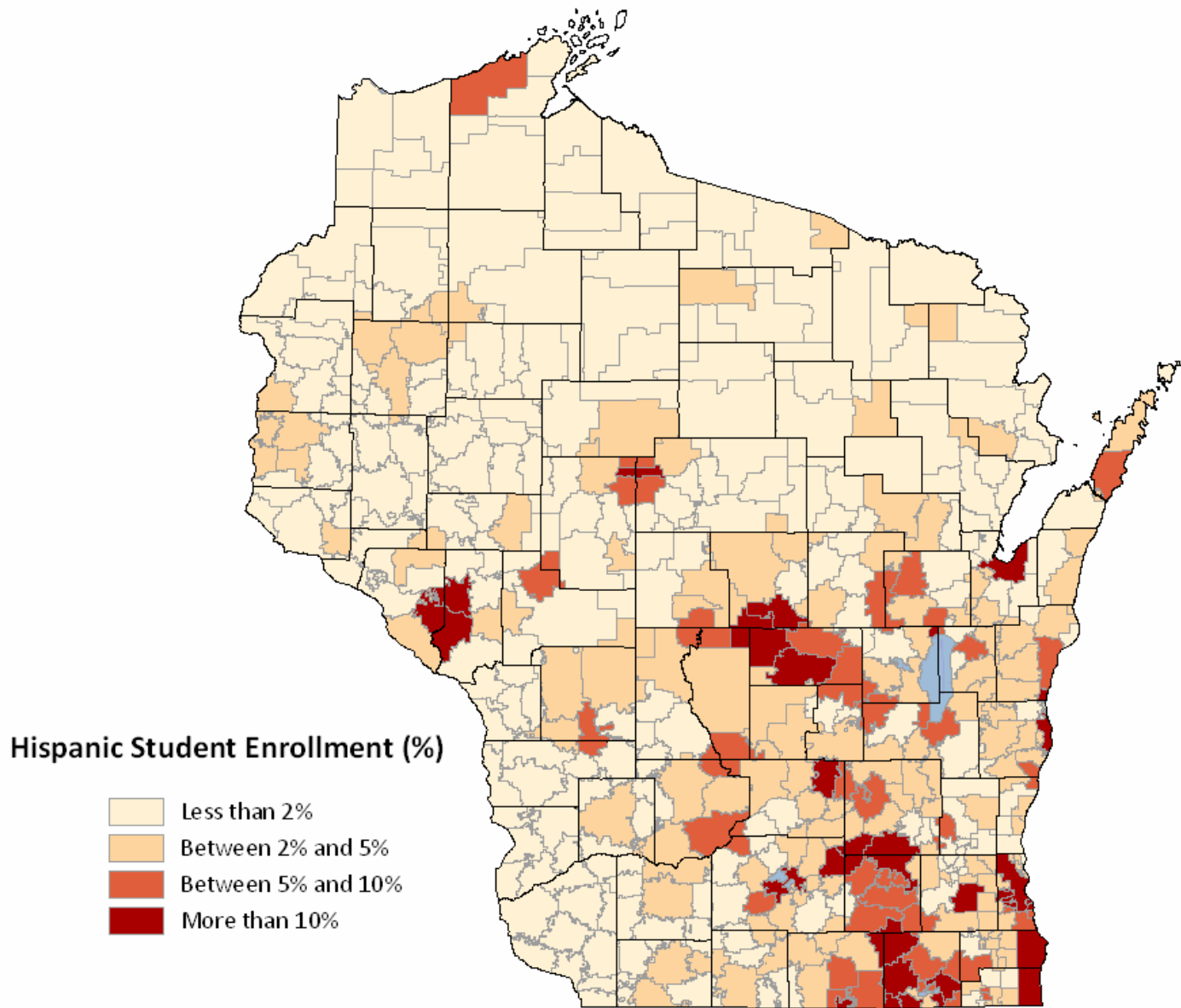


### K-12 Public School Enrollment, 2000-2006: Non-Hispanic White Students



### Hispanic Students Age Structure, Fall 2006





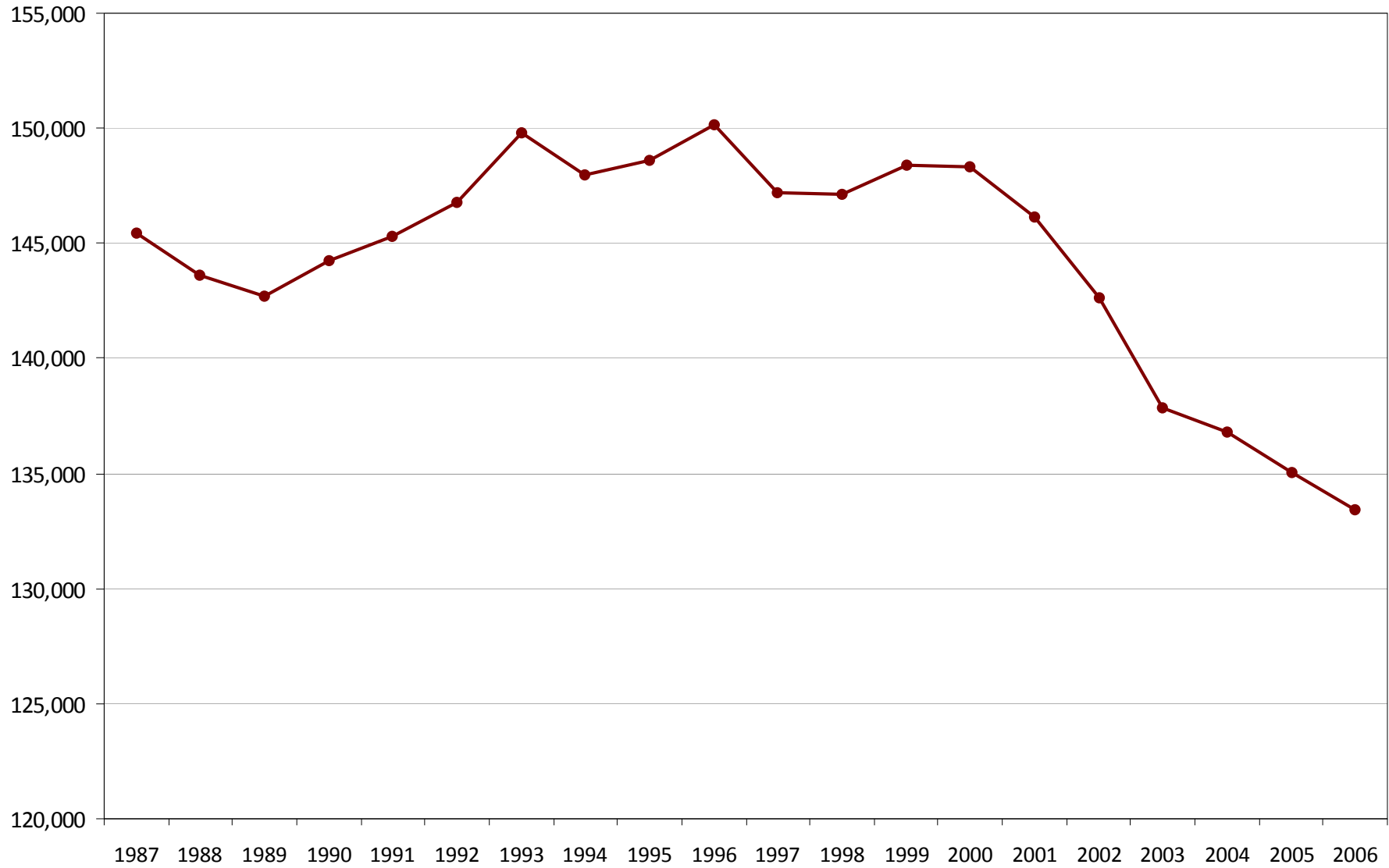
# Factors that Influence Enrollment

---

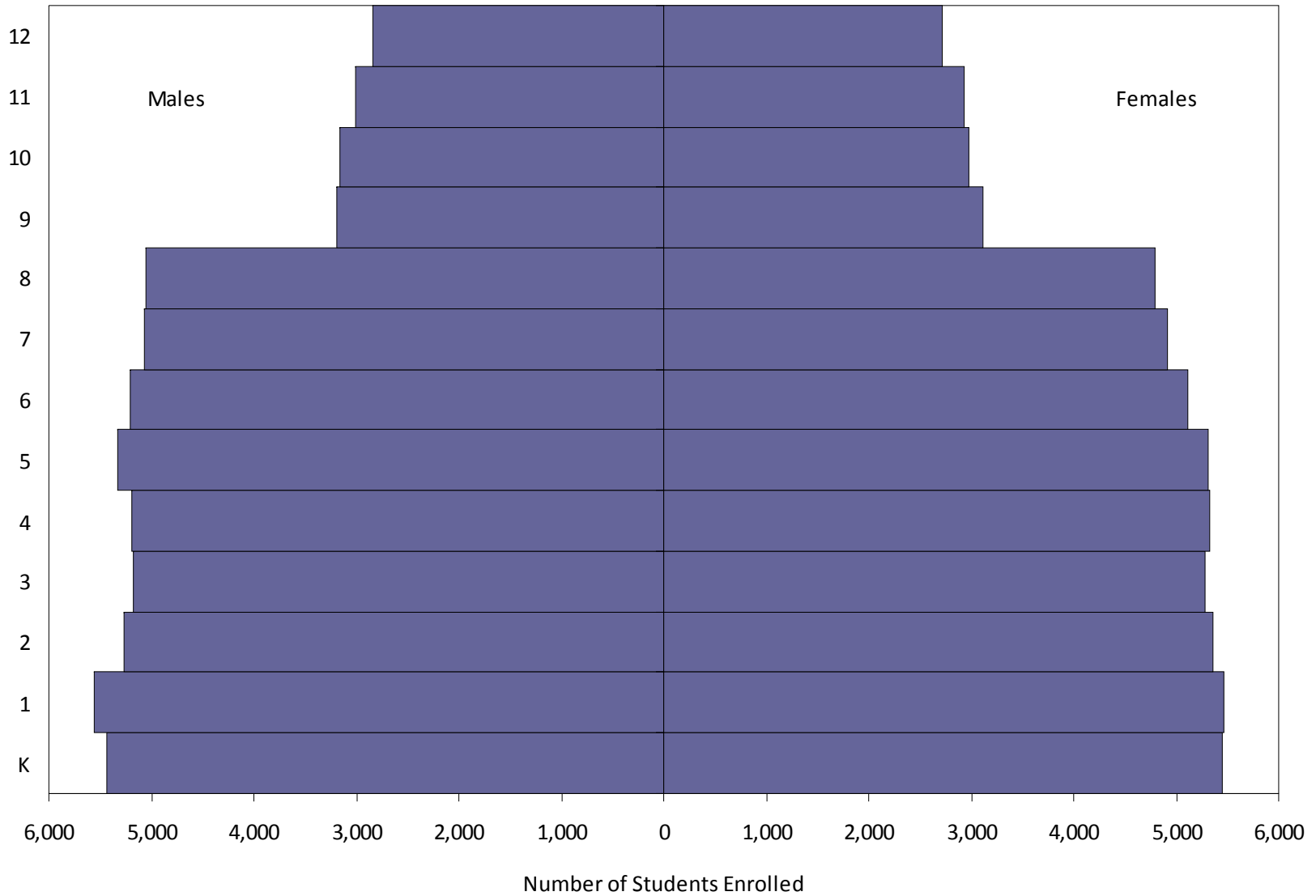
- Private school enrollment
- Home-based Education
- Open enrollment
- Demographics



### Private School Enrollment, 1987-2006



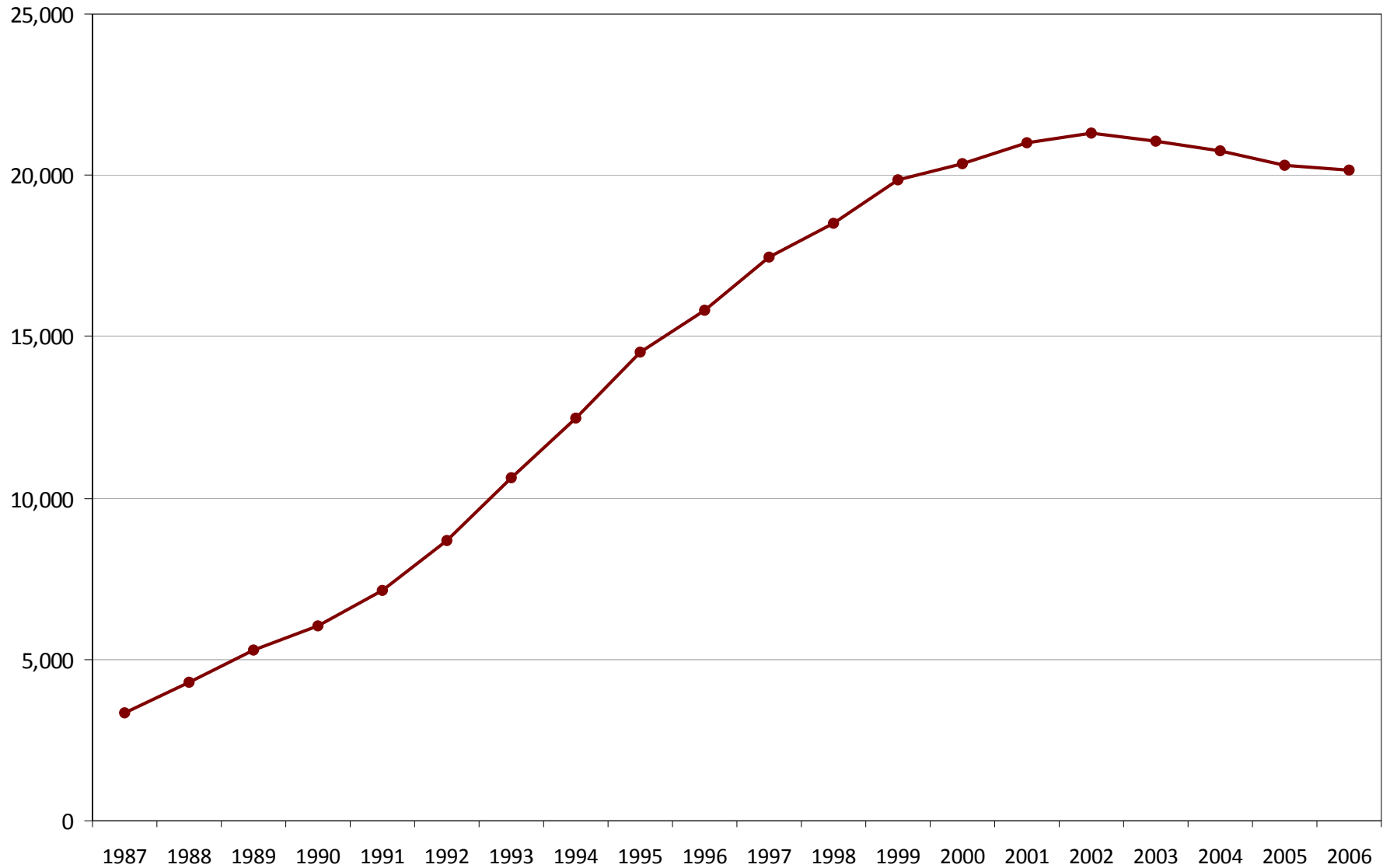
## Private School Students Age Structure, Fall 2006



Wisconsin's Public School Enrollment: Past, Present, Future



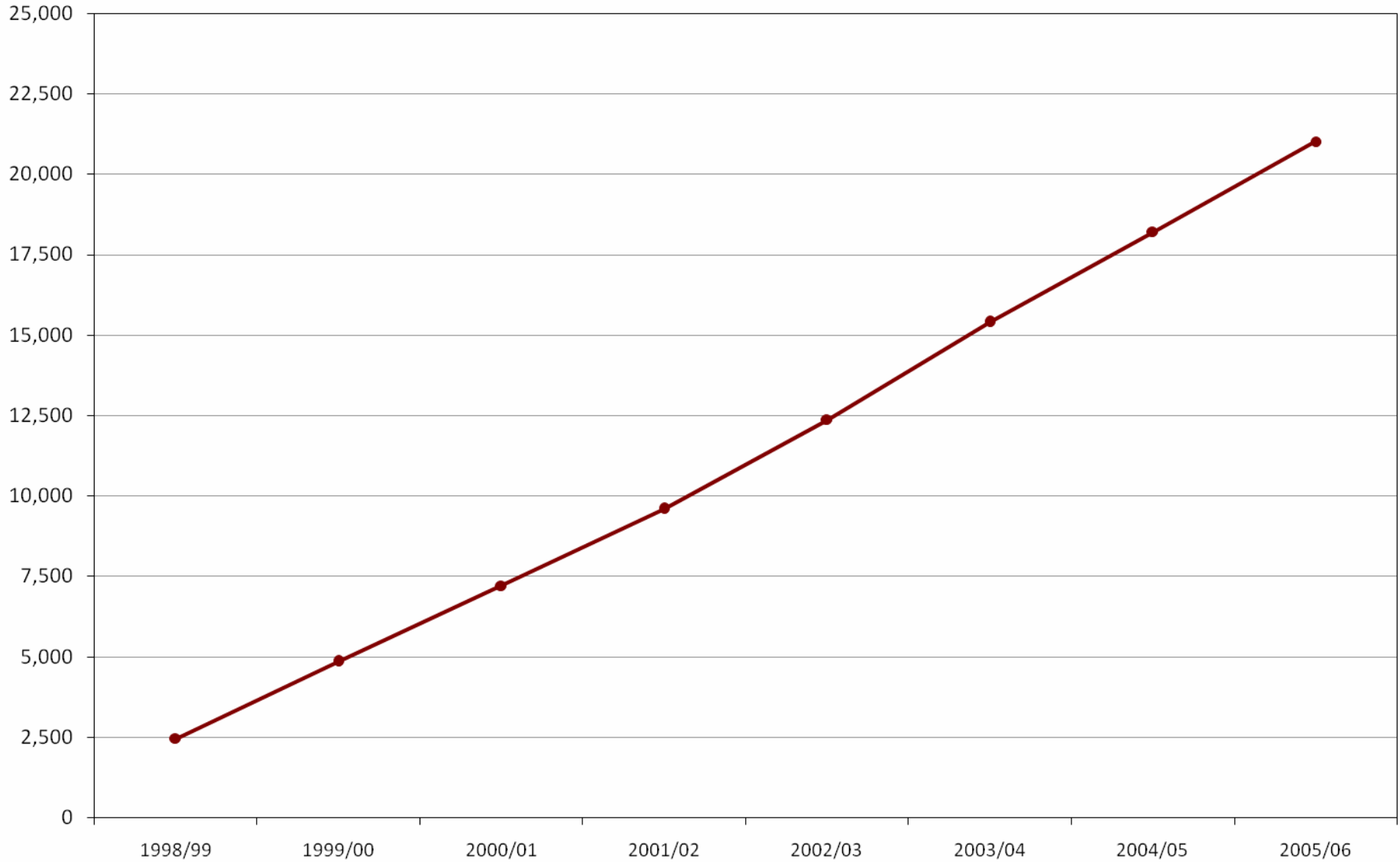
## Home-based Education Enrollment, 1987-2006



Wisconsin's Public School Enrollment: Past, Present, Future



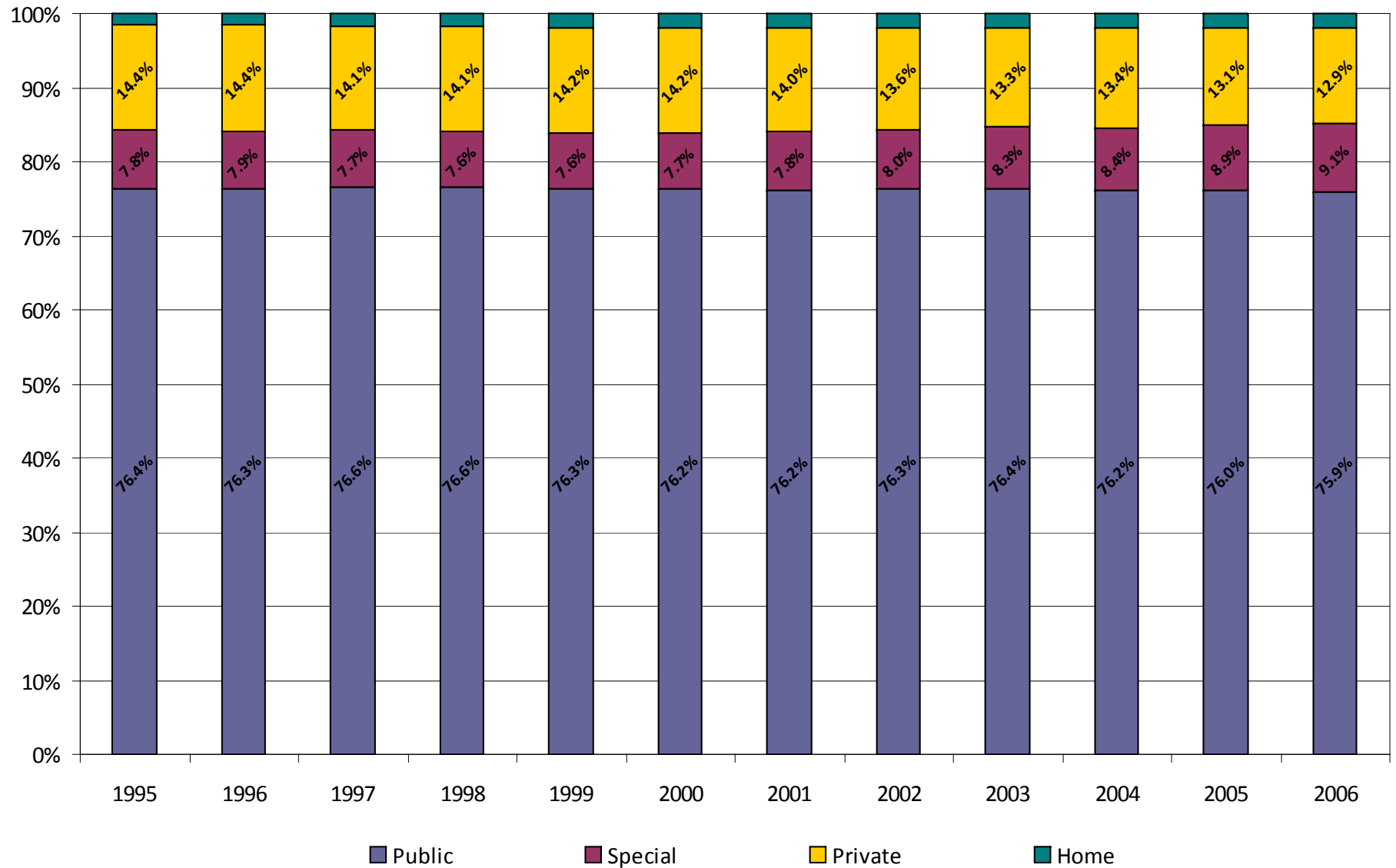
### Open Enrollment, 1998/1999 - 2004/2005



Wisconsin's Public School Enrollment: Past, Present, Future



## Proportion of Total 1st through 12th Grade Students by Type of School, 1995-2006

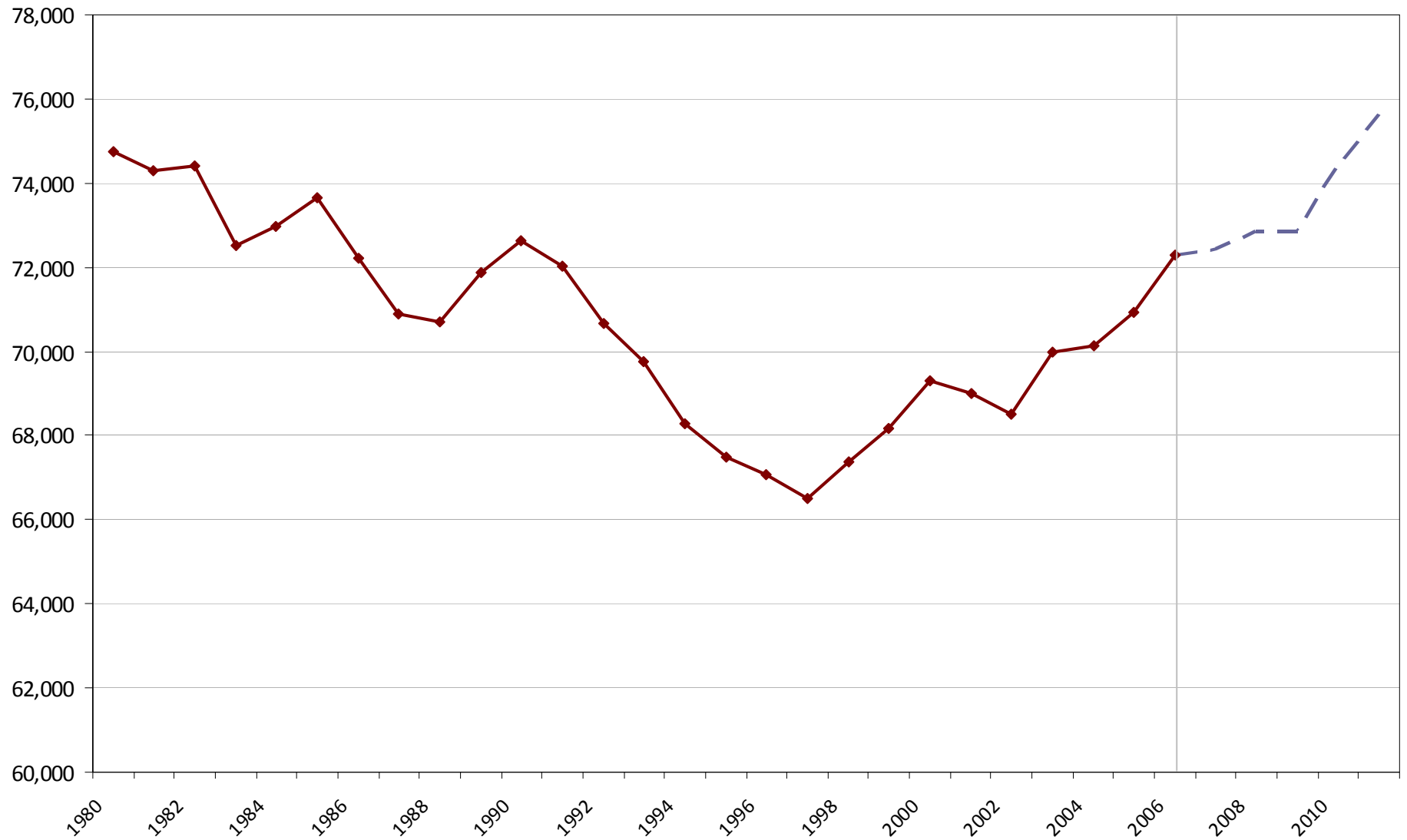


# What can we learn from broader demographics?

---

- Births
- Age Structure
- Migration

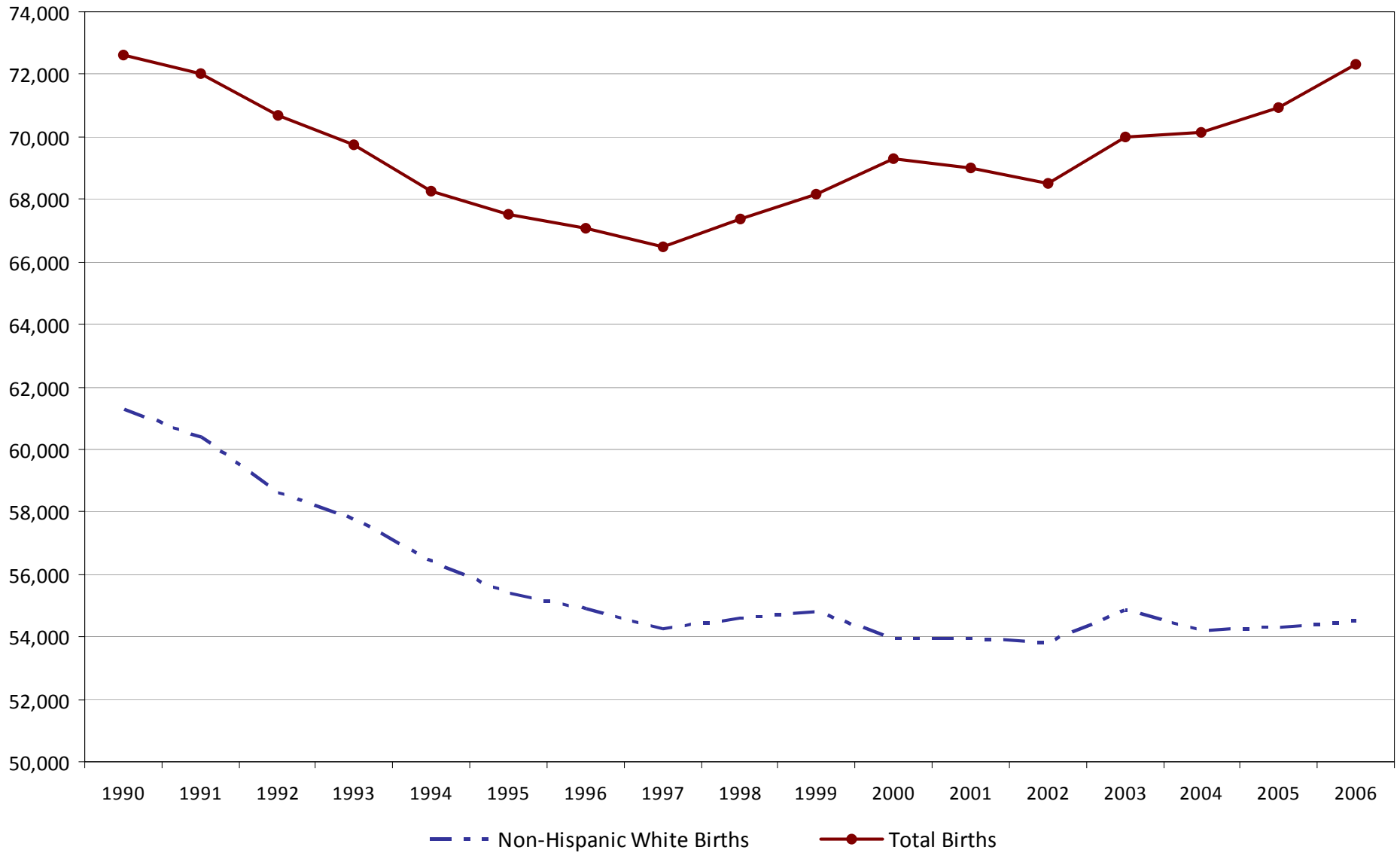
### Observed and Projected Births, 1980-2010 State of Wisconsin



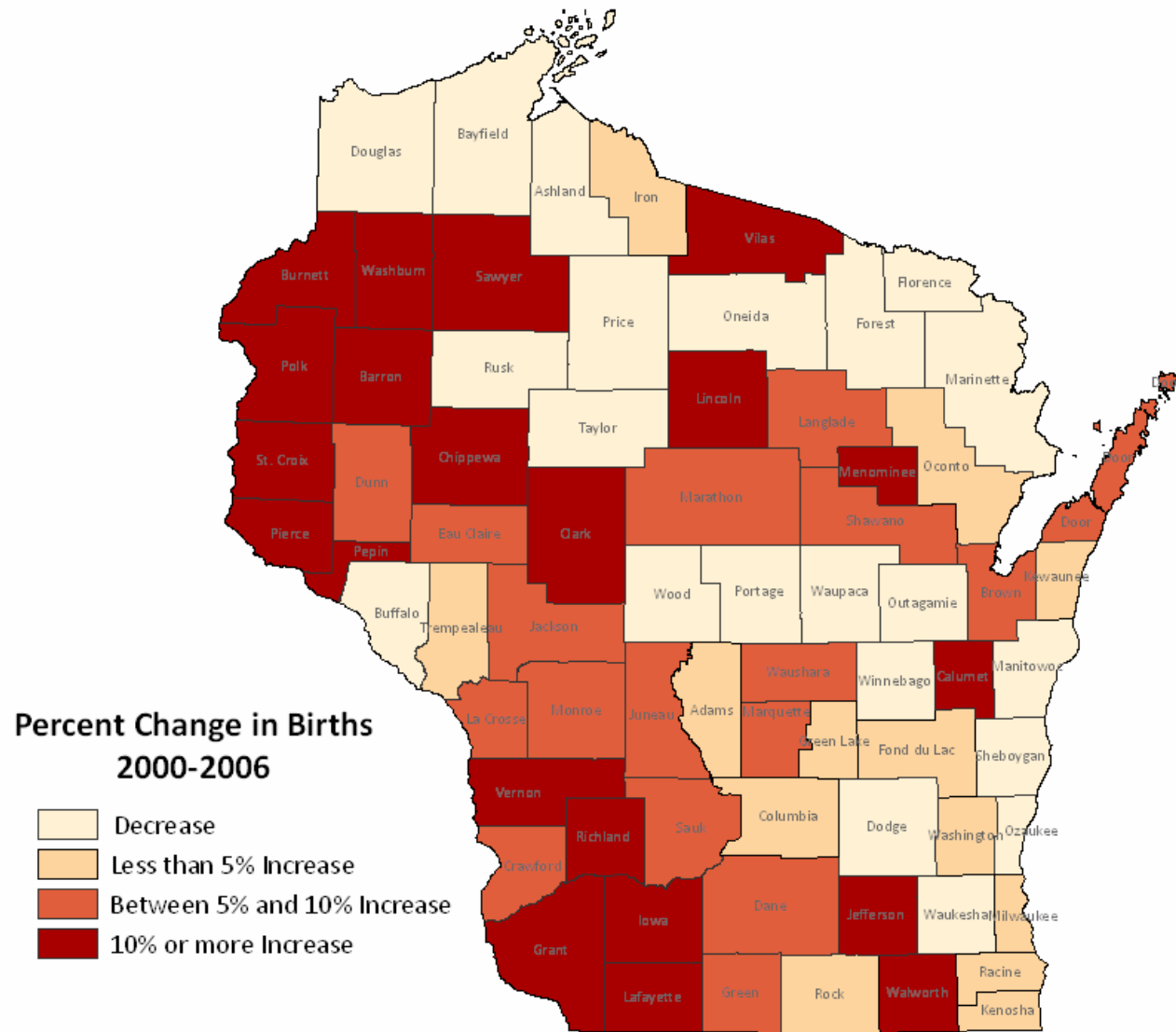
Wisconsin's Public School Enrollment: Past, Present, Future



### Wisconsin Births by Race/Ethnicity, 1990-2006

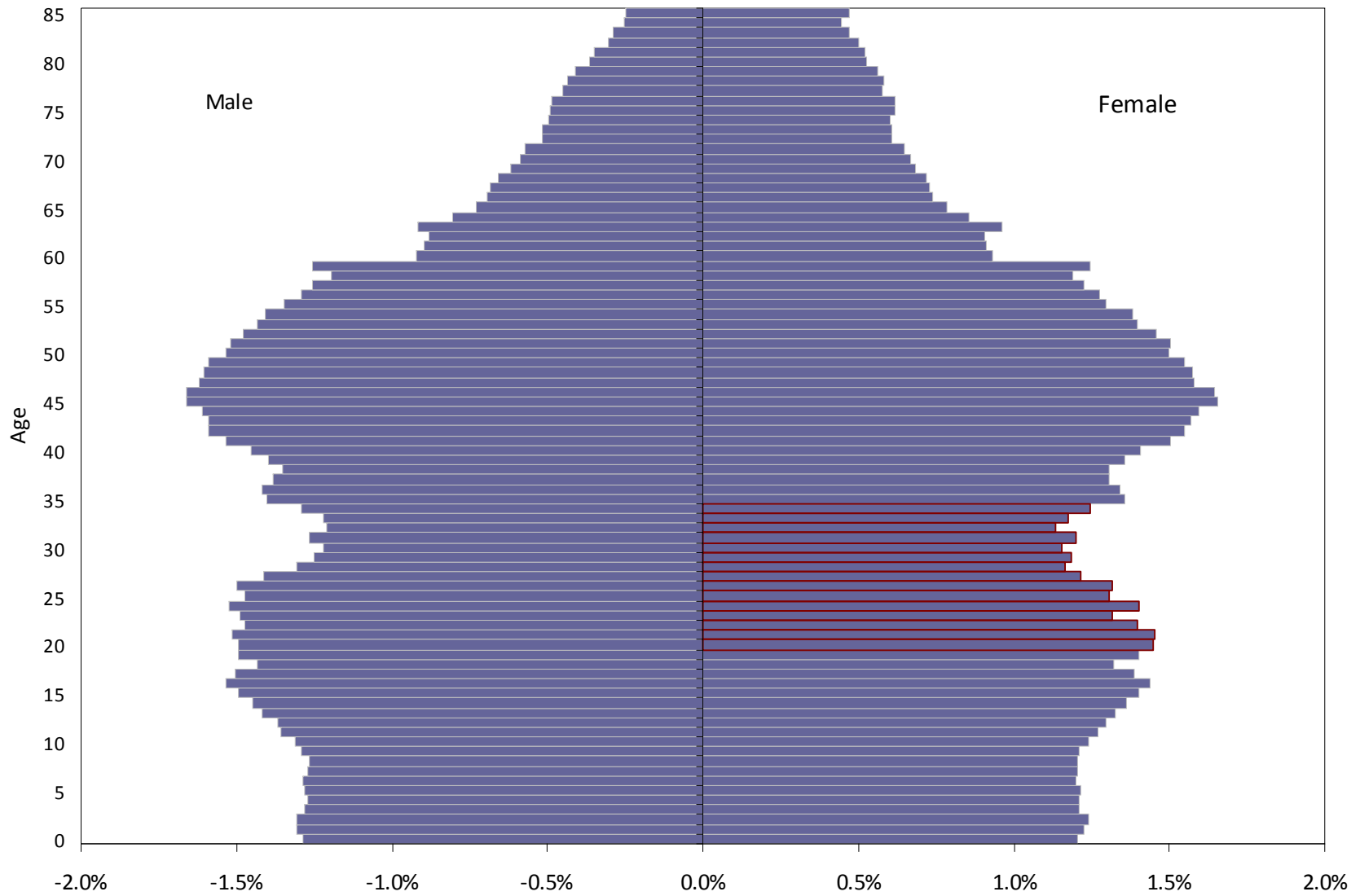






Wisconsin's Public School Enrollment: Past, Present, Future

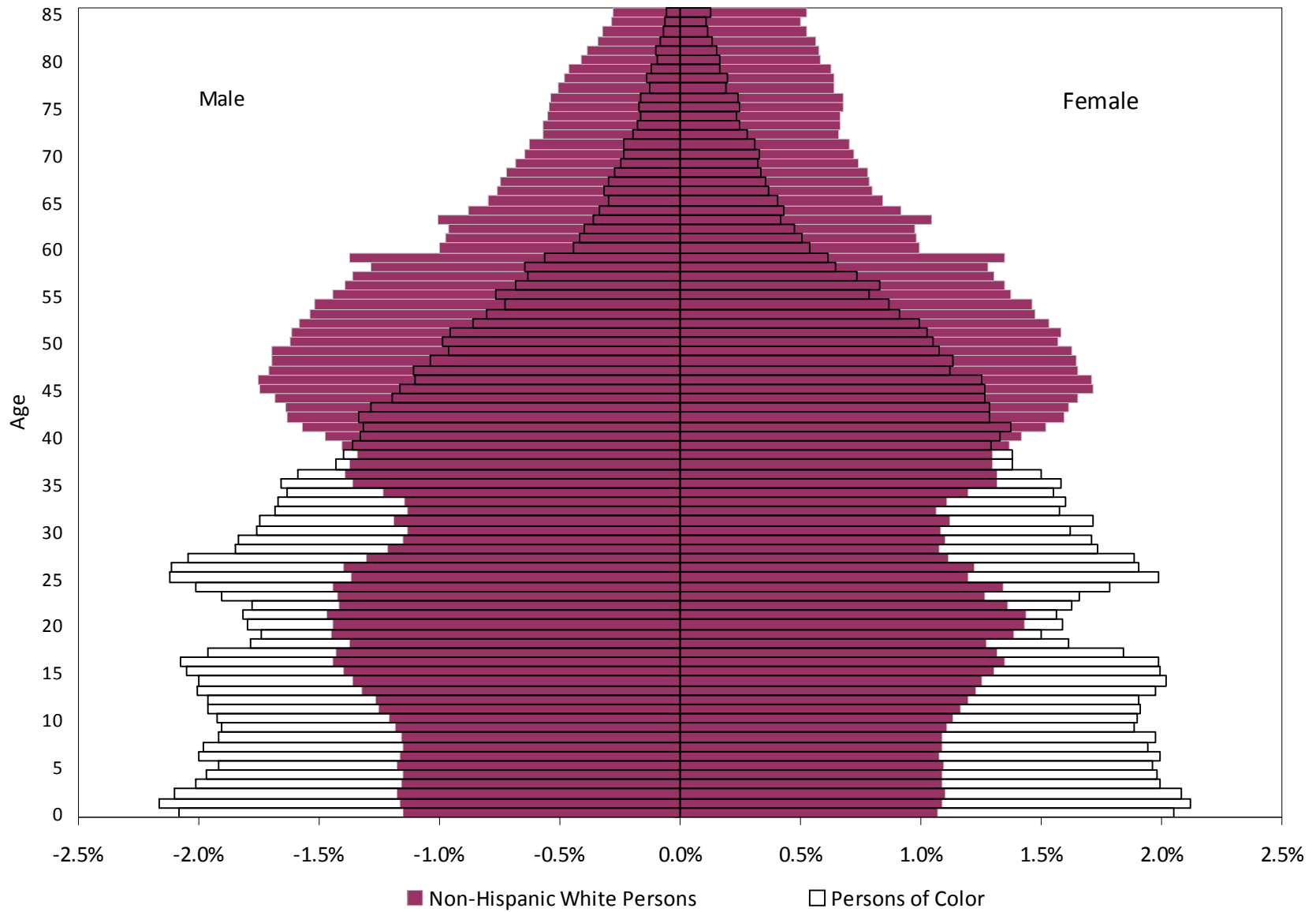
# Wisconsin Age Structure, 2006



Wisconsin's Public School Enrollment: Past, Present, Future



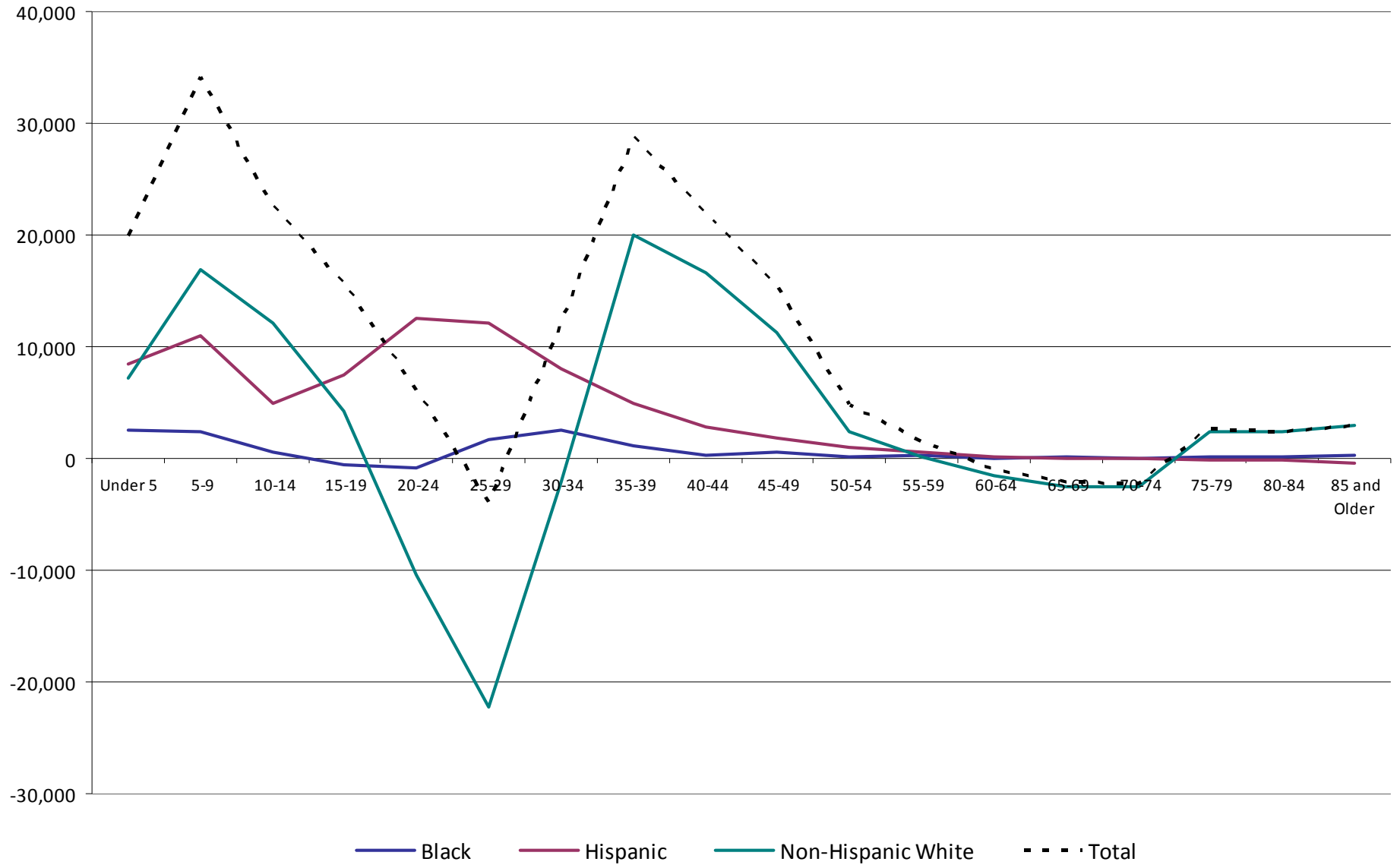
# Wisconsin Age Structure, 2006



Wisconsin's Public School Enrollment: Past, Present, Future

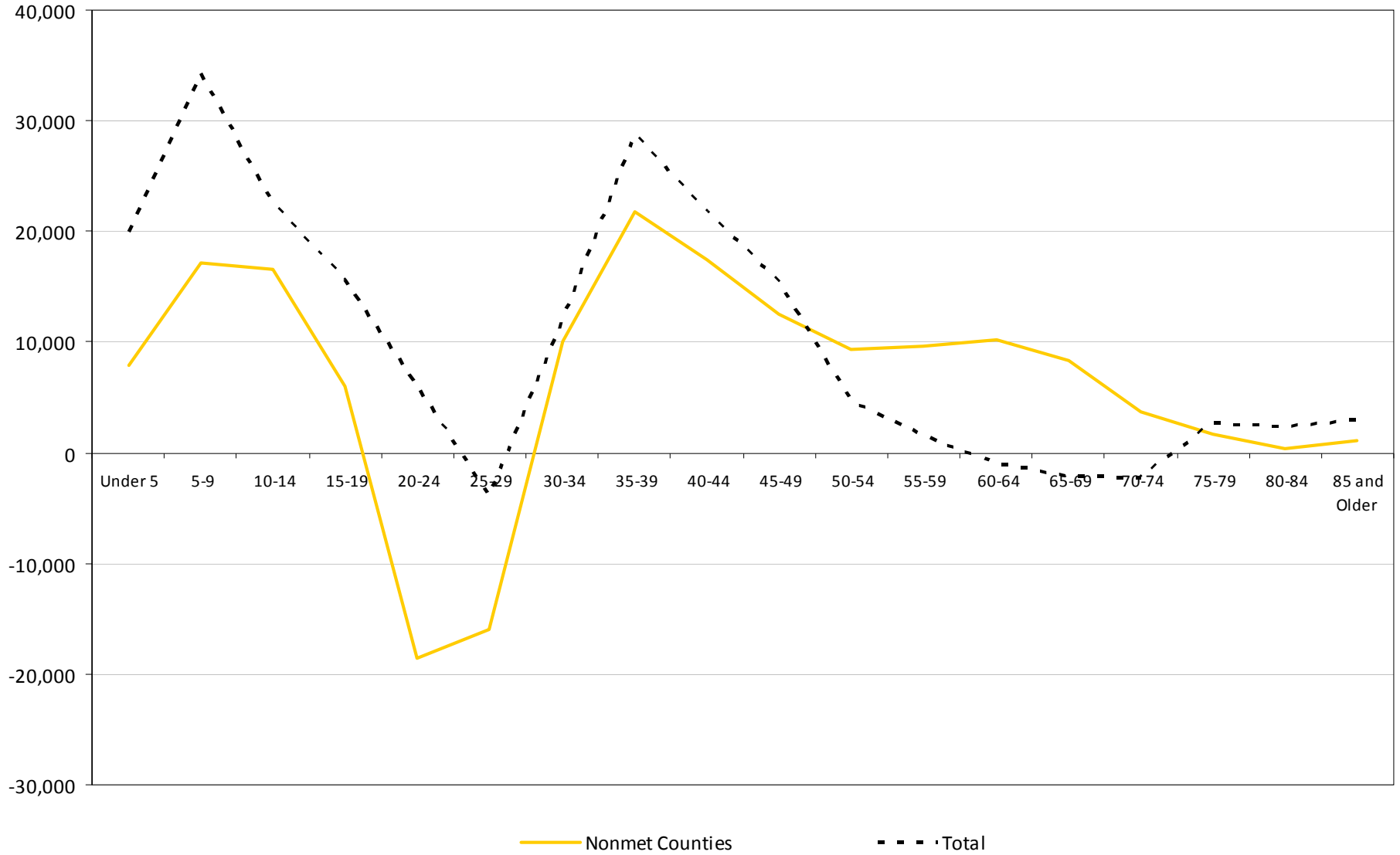


## Net Migration by Age and Race/Ethnicity, 1990-2000



# Net Migration by Age , 1990-2000

Nonmetropolitan Wisconsin



Wisconsin's Public School Enrollment: Past, Present, Future



# Demographic Summary

---

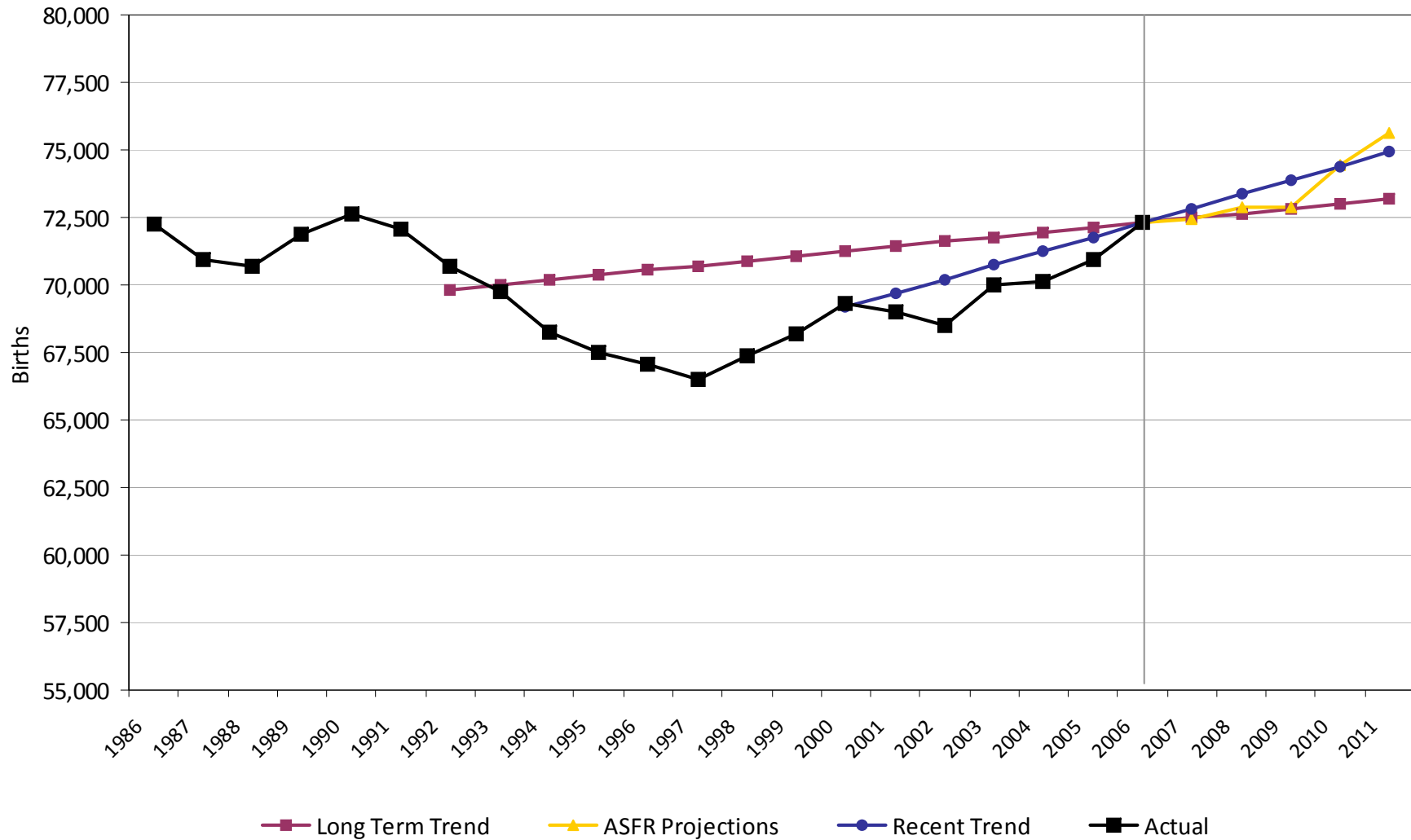
- Few births in Wisconsin in 1990s, contributed to declining enrollment in early 2000s
  - Births are increasing, particularly Hispanics
- Age structure contributed to low births
  - Increasing numbers of women coming into prime childbearing years, particularly minorities.
- Migration
  - Contributed to increase 1990-2000, likely 2000-2006

# The Future: Enrollment Projections

---

- ❑ Cohort component method
- ❑ Grade progression ratios for Grades 1<sup>st</sup> to 12<sup>th</sup>
  - Average ratio of previous year 1<sup>st</sup> graders to current year 2<sup>nd</sup> graders
- ❑ Birth to Kindergarten
  - 3 models: Long Term trend, Recent trend, ASFR
- ❑ By race/ethnicity
- ❑ By urban/suburban/rural locale

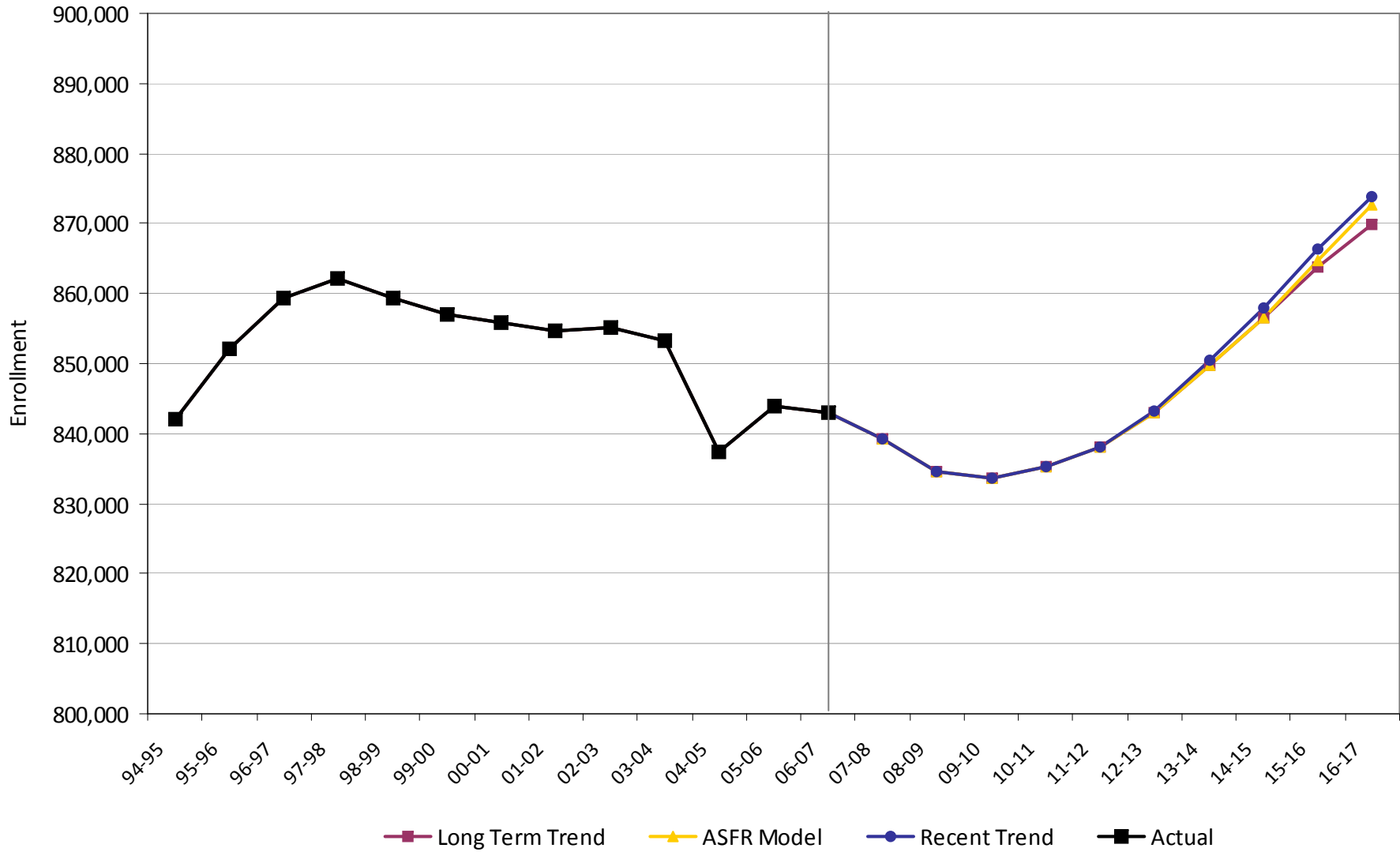
## Birth History and Projections, 1986-2011 State of Wisconsin





## K-12 Public School Enrollment: History and Projections, 1994-2016

### State of Wisconsin

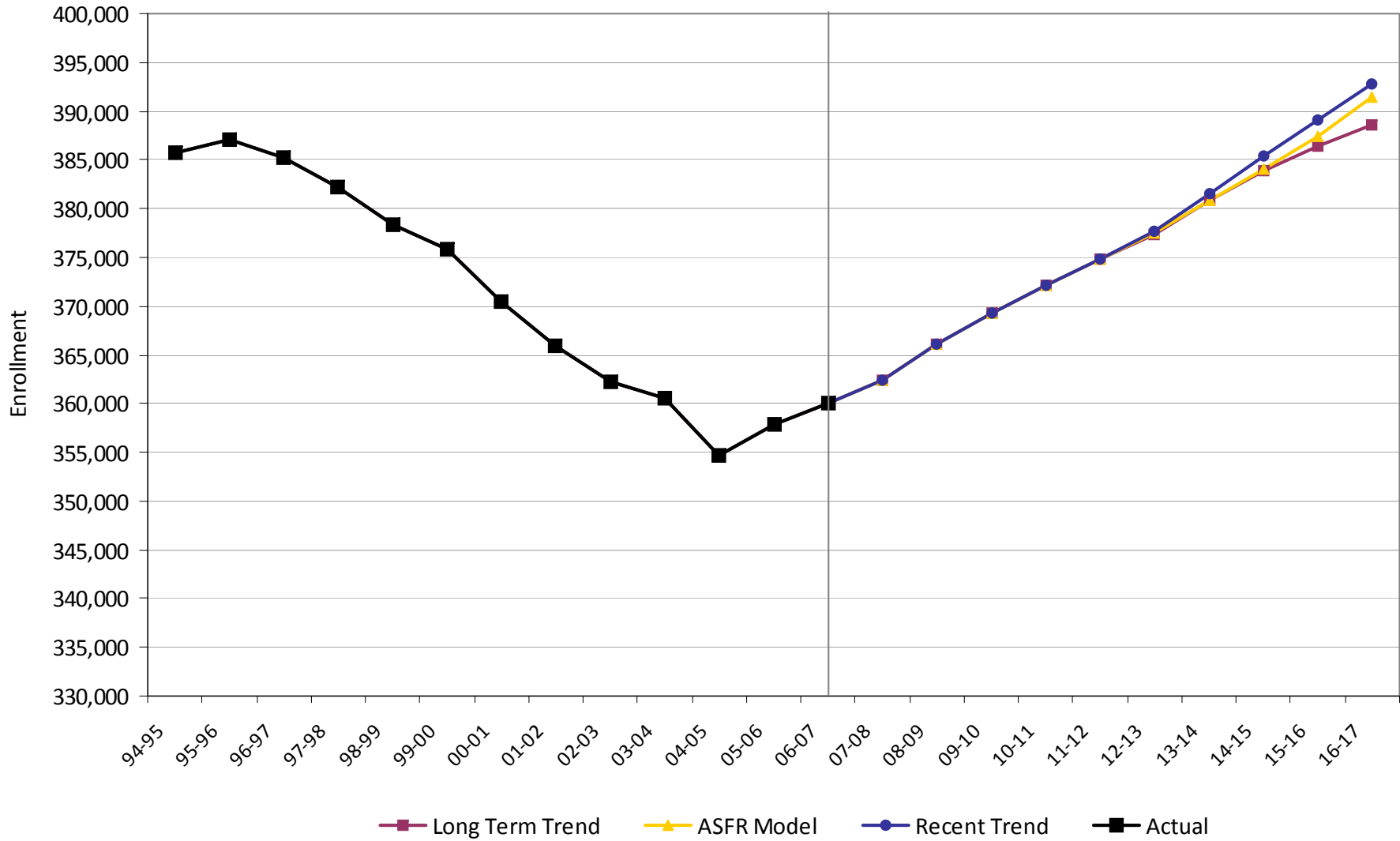


Wisconsin's Public School Enrollment: Past, Present, Future



## Public School Enrollment in Grades K-5: History and Projections, 1994-2016

### State of Wisconsin

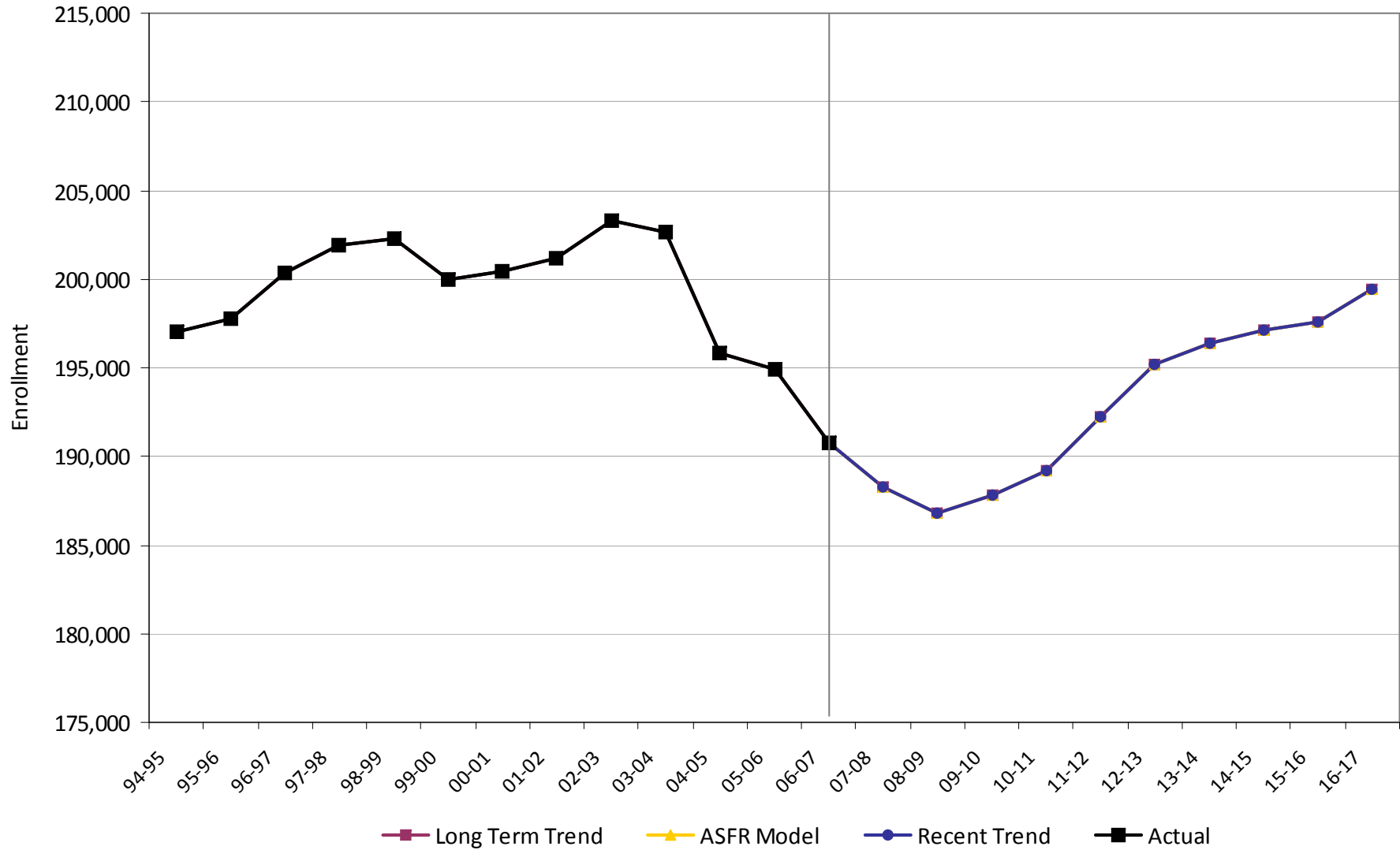


Wisconsin's Public School Enrollment: Past, Present, Future



## Public School Enrollment in Grades 6-8: History and Projections, 1994-2016

### State of Wisconsin

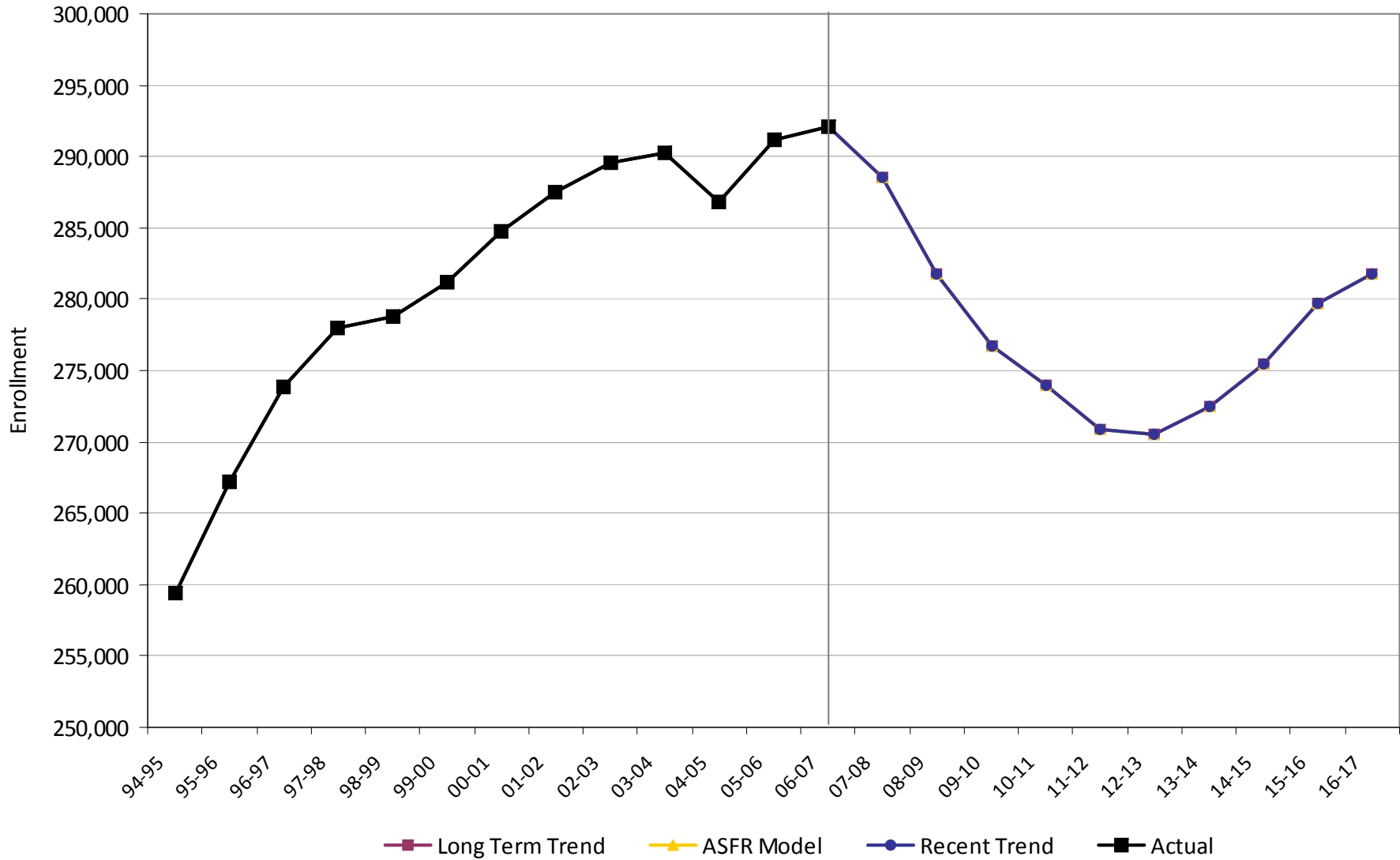


Wisconsin's Public School Enrollment: Past, Present, Future



## Public School Enrollment in Grades 9-12: History and Projections, 1994-2016

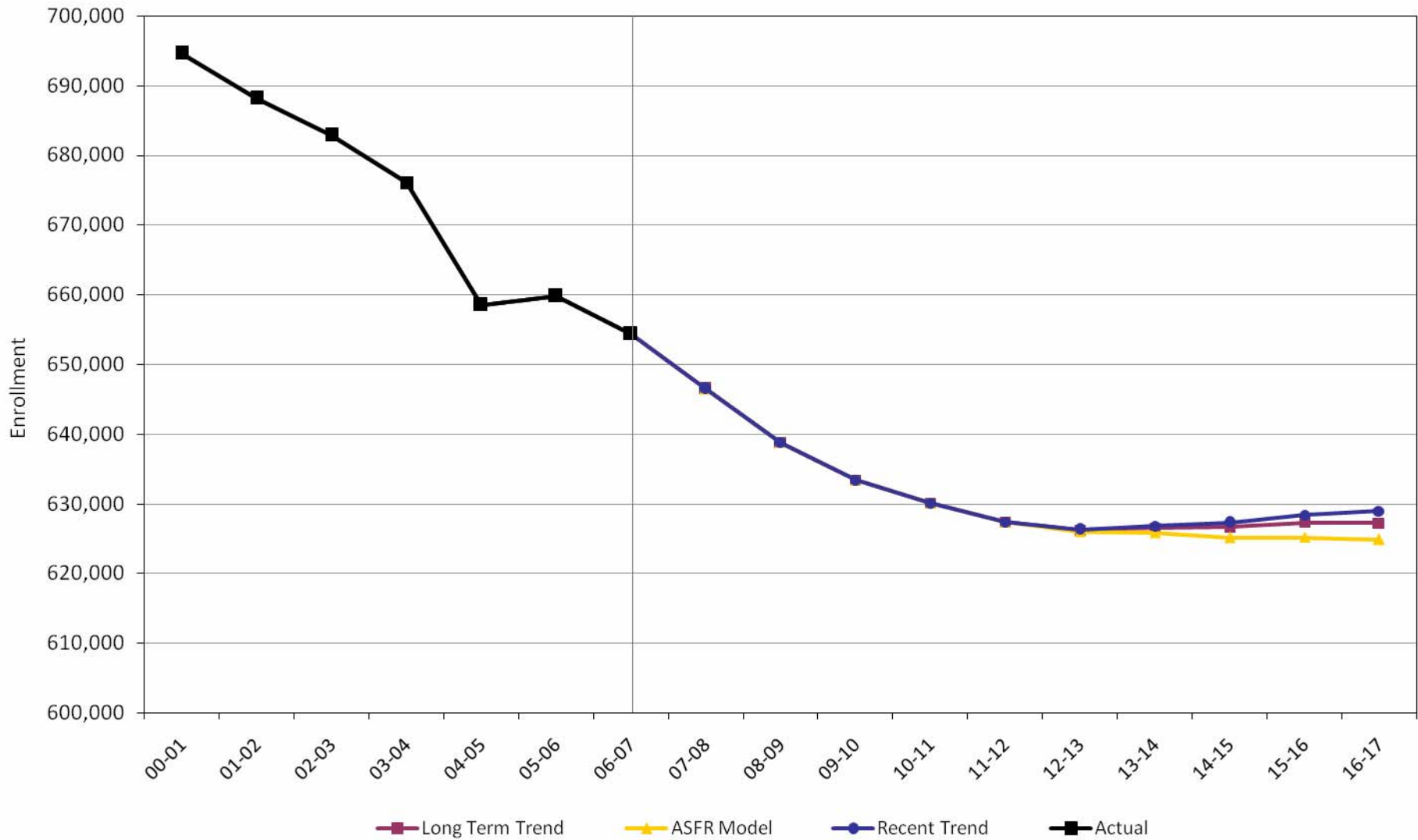
### State of Wisconsin



Wisconsin's Public School Enrollment: Past, Present, Future

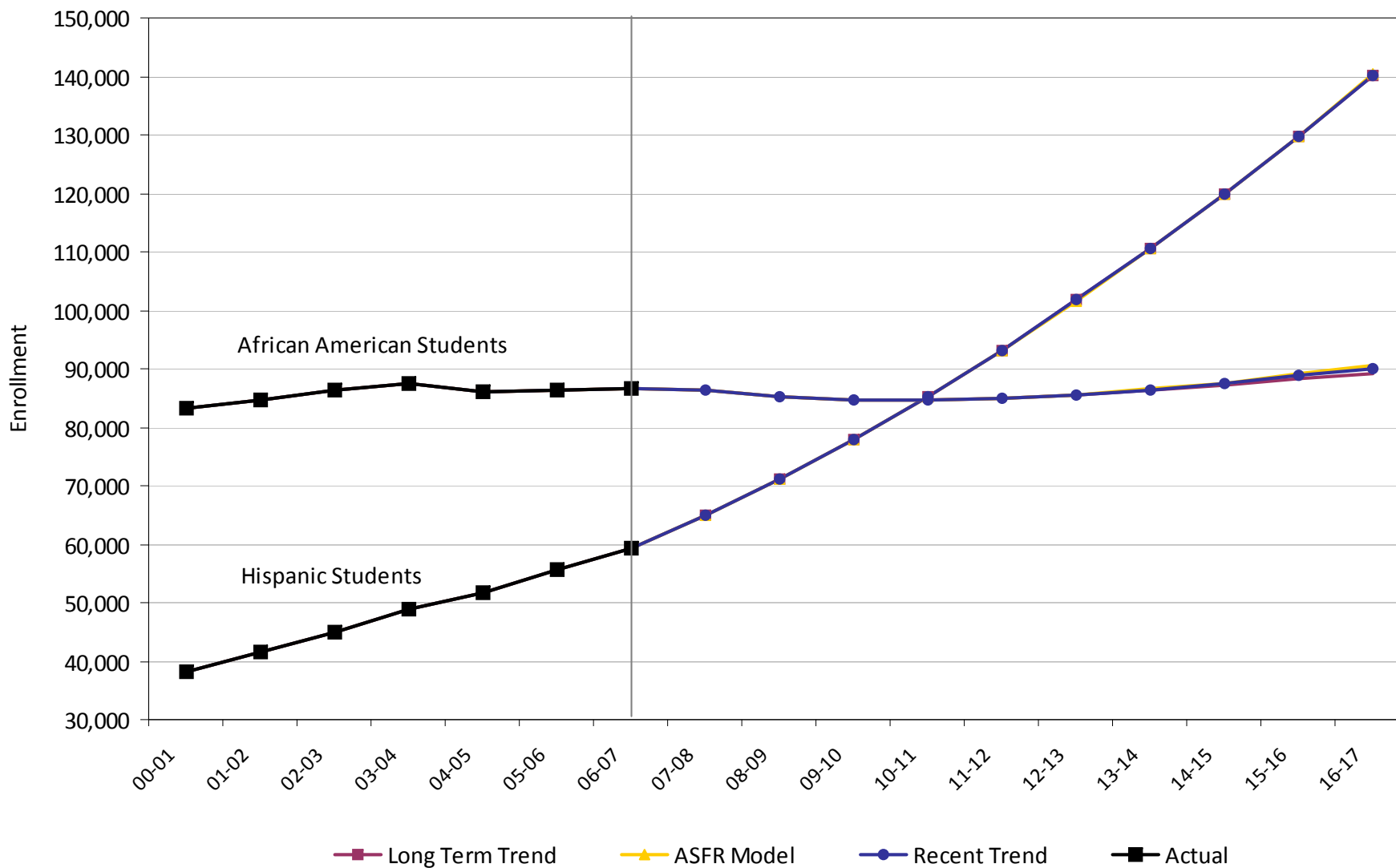


## K-12 Public School Enrollment: History and Projections, 2000-2016 Non-Hispanic White Students



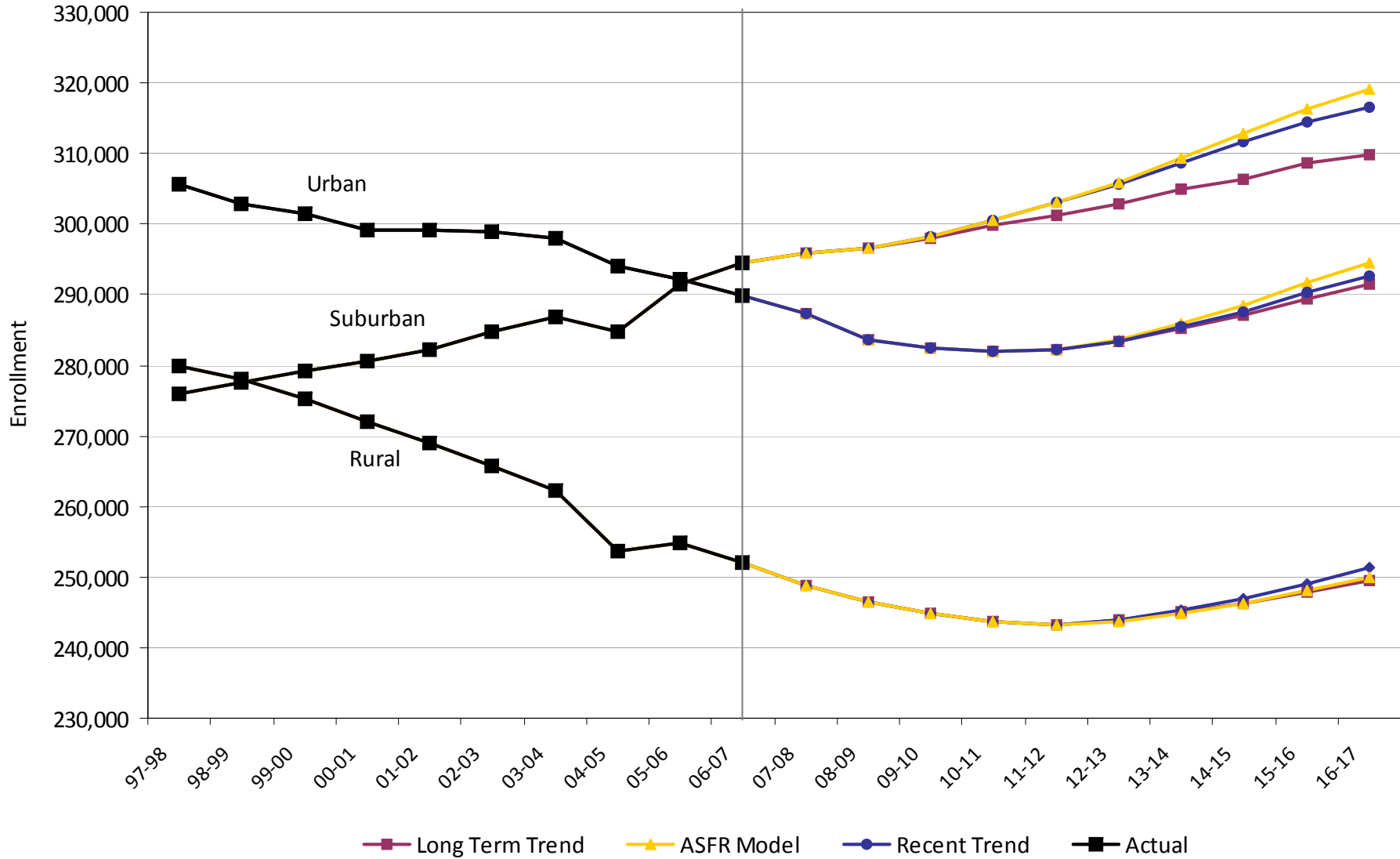
## K-12 Public School Enrollment: History and Projections, 2000-2016

### Hispanic and African American Students



## K-12 Public School Enrollment: History and Projections, 1997-2016

### Urban, Suburban, and Rural School Districts



Wisconsin's Public School Enrollment: Past, Present, Future



# Summary Points

---

- ❑ Widespread enrollment decline, but uneven
- ❑ Decline related to broader demographic trends
- ❑ Decline projected to continue another 2-3 years at state level and then rebound; however, K-5 already increasing and projected to increase rapidly over next several years
- ❑ Hispanic student population projected to increase rapidly and overtake African American as largest minority students in 2010.
- ❑ Non-Hispanic White population projected to continue decline
- ❑ Suburban districts projected to increase, while urban and rural projected to decline for another 3-4 years, then to rebound to levels similar to 2006.